

FULL-RANGE MOVING COIL UNIT



- 57MM full frequency dynamic coil unit significantly
- improves dynamic and transient sound field
- Dig deep into every detail of music

torch lighting	high fidelity sound quality
Self-contained	HIFI
Bluetooth 5.3	ambient light LED
	handheld Convenient

High-quality diaphragm blast for an explosive listening experience

SOLAR BLUETOOTH SPEAKER

MUSIC'S RANDOM AND STUNNING SOUND EFFECTS



Small and portable Surging bass Bluetooth 5.3



ENJOY MUSIC ANYTIME ANYWHERE

SMALL VOLUME AND HIGH VOLUME



Small-Volume Rgb Colorful Lights 50000 High-Power Silky Feel

GUANGZHOU CHUANGMAO ELECTRONIC DIGITAL CO., LTD

Mob: +86 159 7536 4716

Add: The first floor of No. 22, Shaji Xinxing East Street, Liuersan Road, Liwan District, Guangzhou City, Guangdong Province



InRaiser®

Branding For You

3C@TGL.HK
OVERALL

•3CDigital Wholesaler Magazine•

2025



NO. 01

The First Issue



Rich 3C Resource Products Carefully Select High-quality Enterprises For You



ISSN 2708-4744



9 772708 474001 >

GATHER ALL KINDS OF 3C PRODUCTS

ASSORTMENT FOR YOU TO CHOOSE

24h/+86 133 1080 0700

TWS | POWER BANK | VR GLASSES | SMART WATCH | AUDIO | DRONE

FOCUS ON AUDIO

OHAYO-M8



It integrates 2x4" mid-bass unit and 2x20mm tweeter, plus 100W peak power and dual bass-enhancing diaphragm configuration to create a loud and powerful ohayo signature sound.



AUDIO ADVANTAGE

Large acoustic cavityAudio Advantage

- 2x20mm tweeter
- 2x4mm mid-bass unit
- 100W peak power

ICONIC BUCKLE STRAP
easy to carry

ICONIC BUCKLE STRAP
stylish appearance

BATTERY LEVEL DISPLAY
Intuitively



ABOUT US

OHAYO GROUP

OHAYO Group Co., Ltd. is an audio equipment company integrating R&D, production and sales. The company mainly produces and sells digital audio and video products and household appliances. With the business philosophy of "excellence", we are committed to delivering pure, clear and natural sound to people, making music inspirational. What melts into the ear is not only the feeling of sound, but also the charm of sound.

CONTACT DETAILS

Tel: 0755-89580949 Mobile: 15361846658
Email: support@ohayo.com.cn
Address: 2nd Floor, Huaya Building, Huaya Industrial Park, Longhua District, Shenzhen

"LITTLE BIRD" THAT CAN TALK AND SING

Libratone BIRD smart bluetooth speaker

Simple and quasi-physical design, with fashionable and colorful color matching, the overall shape is unique and lively

Small speakers
lots of fun



A VARIETY OF CONTROLS FULL OF FUN

- Turn head left/right ready to start
- Mouth opening with voice prompt and bottom light ring for status indication
- Lightly touch the area of the head above the mouth Wake up voice assistant
- Tap the button on the tail to control music playback

A VARIETY OF CONTROLS FULL OF FUN

The bottom of the magnetic suction design, easy to attach to the iron metal surface, and comes with a magnetic base that can be pasted.



CONTACT US

Tel:400-650-7810 E-mail:support@little-bird.com.cn
Address: A3, Building 1, No. 18, Keyuan Road, Economic Development Zone, Daxing District, Beijing



GK-E050B



GK-E039



GK-726B



GK-JT10A



GK-E041



GK-E037



GK-MK020



GK-E043A



歌酷音频之家 APP
Geku Audio Home APP



袁小姐
电话: 13724254360
邮箱: 1119613097@qq.com



刘小姐
电话: 13725527078
邮箱: 670063521@qq.com



Name: Alice
电话: 13723505725
邮箱: alice@honkyo.com

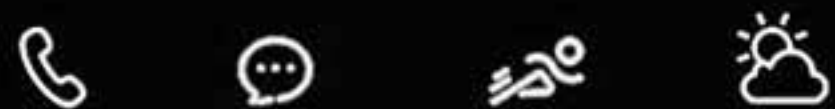


东莞市歌酷声学有限公司
Dongguan Geku Acoustics Co., Ltd.

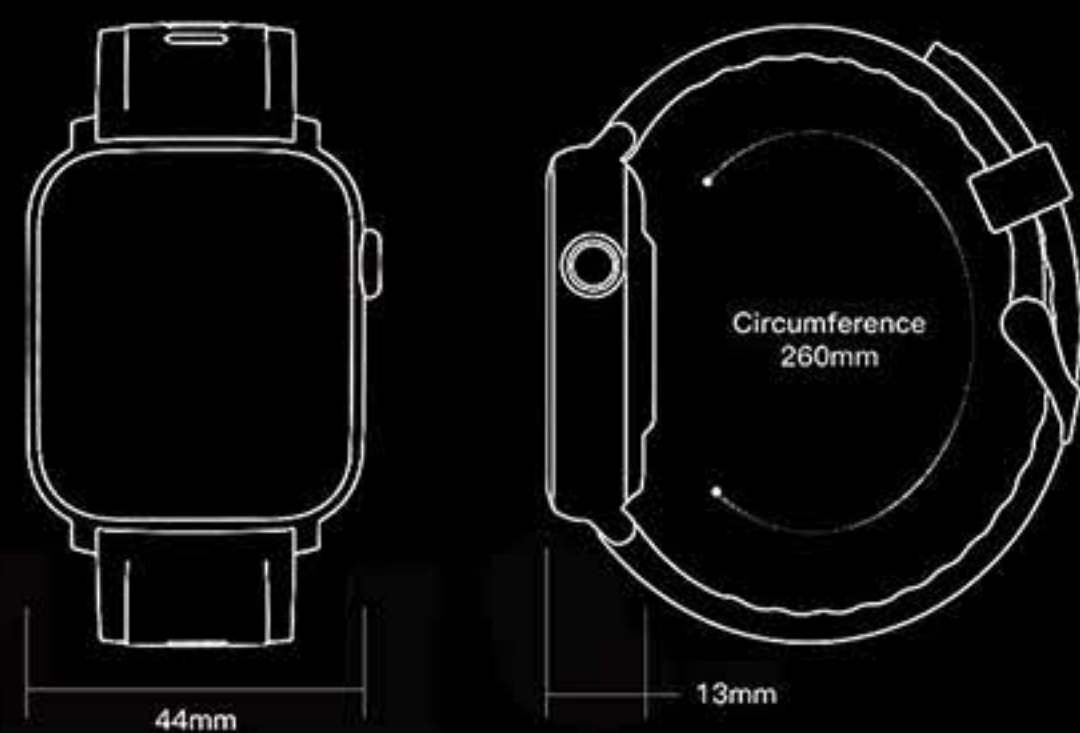




SPORTS SMART WATCH



Bluetooth connection, information is not missed



MORE STYLES FOR YOU TO CHOOSE

Smart / Convenient / Beautiful



NIAEL SMART WATCH TECHNOLOGY CO., LTD

E-mail: CED_CN@Niael.com

Https: //www.Niael.cn Service Hotline: 400-685-9471

NIAEL
SCAN IT LATEST NEWS
More WooHoo products Choose
one of your own

产品外观设计 产品结构设计的

Product Appearance Design
Product Structure Design



岩石设计
ROCK DESIGN
设你所想

单款设计案例 销量破亿

广东省工业设计协会理事单位



ROCK DESIGN

广州岩石艺术设计有限公司
Guangzhou rock art design co., ltd

郑先生 15920502282 962938065@qq.com
广州市越秀区北京路街道合润广场2015
2015 Herun Square, Beijing Road, Yuexiu District, Guangzhou



(扫一扫 咨询了解更多)



DONGGUAN QIHANG ELECTRONIC TECHNOLOGY CO.,LTD

Mob: +86 139 2923 1880 (Mr.He) Landline: 0769-8128 3456
 Web: www.qihang18.com QQ: 2880196030 E-mail: hx@qihang18.com
 Add: Room 808-811, Shenglianchuangzhan Building, No. 148 Hongye North Road, Tangxia Town, Dongguan City



COMPANY PROFILE

Dongguan Qihang Electronic Technology Co., Ltd. is engaged in the development of Bluetooth RF, audio, PCBA production line automation test system customization, to provide high-end imported (Rohde & Schwarz, Keysight, Anritsu, Tektronix, Audio Precision, etc.) instrumentation agent sales, rental, maintenance, measurement, replacement, technical support and other one-stop services to reduce customer test input costs, optimize product testing solutions, simplify product testing operations, increase product testing capacity. We provide one-stop services to reduce the cost of test inputs, optimize product testing solutions, simplify product testing operations and increase product testing capacity. Through unremitting efforts for more than ten years, we have become a one-stop service provider for Bluetooth product development, production and testing, and a well-known enterprise with the sales of internationally renowned branded instruments as the mainstay and the development and production of our own branded instruments at a high speed, creating a new brand in the Chinese instrument industry.

R&S®CMW270 WIRELESS CONNECTIVITY TESTER

Bluetooth RF tester for Low Energy (BLE), Basic Rate and Enhanced Data Rate qualified by the Bluetooth-SIG



WLAN 11 a/b/ /n/ac /ax SISO and MIMO signaling test

Dual tester concept with multiple-standard RF measurements for WLAN SISO/MIMO and Bluetooth

Server for WLAN application testing and customizable R&S®CMWrun test sequencer

General purpose ARB generator for Bluetooth, WLAN, GNSS and various broadcast technologies

R&S®ESW EMI TEST RECEIVER

Excellent RF characteristics and fast measurements

Key features

Frequency range: 1 Hz to 8, 26.5 or 44 GHz
 Compliant with CISPR 16-1-1, ANSI C63.2, MILSTD461 and FCC standards
 Excellent dynamic range and accuracy
 Ultra-fast measurements with FFT-based time domain scanning
 Supports real-time spectrum analysis with 80 MHz bandwidth (optional)



R&S®FSW SIGNAL AND SPECTRUM ANALYZER

Setting standards in innovation and usability

Unparalleled low phase noise and best sensitivity on the market

8.3 GHz internal analysis bandwidth

800 MHz real-time analysis bandwidth

SCPI recorder simplifies code generation

High dynamic range enables outstanding EVM performance



TEK 3 SERIES MDO MIXED DOMAIN OSCILLOSCOPES

Key performance indicators

2 analogue channel and 4 analogue channel models
 100 MHz, 200 MHz, 350 MHz, 500 MHz, 1 GHz bandwidth models

Bandwidth scalable (up to 1 GHz)

Up to 5 GS/s sampling rate

10 M record length on all channels

>280,000 wfms/s Maximum waveform capture rate

Passive voltage probe as standard, 3.9 pF capacitive load and

250 MHz or 500 MHz or 1 GHz analogue bandwidth

Spectrum analyser (optional)

Frequency range: 9 kHz-1 GHz (standard) or 3 GHz (optional)

Extremely wide capture bandwidth up to 3 GHz

Arbitrary function generator (optional)

13 pre-defined waveform types

50MHz waveform generation

128k arbitrary waveform generator

record length 250MS/s arbitrary

waveform generator sample rate

Digital channels (optional)

16 digital channels

10M record length on all channels

121.2 ps timing resolution



R&S®SMW200A VECTOR SIGNAL GENERATOR

The fine art of signal generation

Frequency range up to 67 GHz (dual path: up to 44 GHz)

2 GHz modulation bandwidth

Integrated fading with up to

800 MHz bandwidth and up to 8x8

MIMO

Signal generation for all major digital communications standards

Advanced GNSS and radar simulator

Get a Quote Configure your product



KEYSIGHT TECHNOLOGIES E8267D PSG VECTOR SIGNAL GENERATOR 100 KHZ TO 44 GHZ

Key features

•Metrology-grade performance and versatility combined with realistic wide-band radar, electronic warfare and satellite communications waveforms support advanced receiver testing

•Up to 4 GHz bandwidth enables simulation of complex electromagnetic environments

•Signal Studio software helps you speed up the creation of complex signals: pulse creation, noise to power ratio (NPR), multiple audio signals, wireless and more

•Excellent SSB phase noise of 143 dBc/Hz at 1 GHz (10 kHz bias) ensures that more complex signal requirements are met

Frequency range

•E8267D-513 Frequency range:250 kHz-13 GHz
 •E8267D-520 Frequency range:250 kHz-20 GHz
 •E8267D-532 Frequency range:250 kHz-31.8 GHz
 •E8267D-544 Frequency range:250 kHz-44 GHz

Baseband generator

•E8267D-003 PSG digital output connection to N5102A
 •E8267D-004 PSG digital input connection to N5102A
 •E8267D-009 Extracted Flash Memory, 8 GB
 •E8267D-602 Internal baseband generator, 64 MSa memory

Spectral purity

•E8267D-UNX Ultra-low phase noise performance
 •E8267D-UNY Enhanced ultra-low phase noise performance
 •Analog modulation AM, FM, phase modulation and low frequency output
 •E8267D-UNT
 •Pulse modulation
 •E8267D-UNU Pulse modulation
 •E8267D-UNW Narrow pulse modulation



KEYSIGHT TECHNOLOGIES E5080B ENA VECTOR NETWORK ANALYZER

Wide frequency coverage from 9 kHz to 4.5/6.5/9/14/20 GHz or 100 kHz to 26.5/32/44/53 GHz

Fully capture device performance with a wide dynamic range of 140 dB

Achieve complete device characterization with optional built-in DC sources, bias tees, pulse generators and pulse modulators

Consistently test between R&D and production with the same UI and SCPI commands as high-end PNAs

Improve throughput by performing spectrum analysis, pulsed-RF measurements, vector mixer measurements, noise figure, and more on a single instrument



KEYSIGHT TECHNOLOGIES N9020B SIGNAL ANALYZERS

Key features

100% interception probability for signals with a minimum duration of 17.3 μs and a full range of advanced triggering features to observe, capture and understand difficult signals

Observe signal dynamics with a comprehensive real-time display

Protect your investment - add real-time spectrum analysis (RTSA) to your instrument at a fraction of the cost of dedicated solutions

Easily integrate the 89600 software into your system, allowing you to analyse complex signals in a comprehensive manner



Application General

•89600 VSA Software
 •Analogue demodulation
 •Noise factor
 •Phase noise
 •Pulse
 •Real-time spectrum analysis
 •MATLAB

Application Cellular

•GSM/EDGE
 •NB-IoT
 •LTE/LTE-Advanced
 •W-CDMA/HSPA/HSPA+

KEYSIGHT TECHNOLOGIES N9030B PXA SIGNAL ANALYZERS

Key features

100% interception probability for signals with a minimum duration of 17.23 μs and a full range of advanced triggering features to observe, capture and understand hard-to-capture signals

Observe signal dynamics with a comprehensive real-time display

Protect your investment - add real-time spectrum analysis (RTSA) capabilities to your instrument at a fraction of the cost of dedicated solutions

Easily integrate the 89600 software into your system, allowing you to analyse complex signals in a comprehensive manner



KEYSIGHT TECHNOLOGIES X-SERIES SIGNAL ANALYZERS

Key features

Design, test and achieve your next breakthrough with our state-of-the-art signal analysis technology

Take advantage of the most comprehensive range of application-specific software for more in-depth debugging or for the easiest single-button measurement

Continuously evolving as technology changes, with the ability to upgrade frequency, bandwidth, instantaneous, CPU and other features after purchase

100% code compatibility from development to manufacturing, allowing the entire enterprise to maintain consistent measurements, regardless of the instrument you choose to use



Find the answers you need faster with outstanding performance at your fingertips

Simpler measurement settings and customisable viewing modes with a new multi-touch interface View, capture and analyse the most erratic signals, known and unknown, with instant spectrum analysis Delivers >75dBc spurious-free dynamic range across the entire 510MHz bandwidth, allowing you to see signals that were previously unobservable More accurate measurement of low-level quasi-signals using Noise Floor Extension (NFE), which reduces measurement noise to 10dB



PRODUCTS	FREQUENCY OPTIONS	BANDWIDTH OPTIONS	REAL-TIME BANDWIDTH OPTION	AT 1GHZ	AT 1GHZ AT 10KHZ FREQUENCY BIAS PHASE NOISE
N9041B UXA Signal Analyzer Multi-Touch 2 Hz to 110 GHz	90, 110 GHz	25 MHz standard 40 MHz, 1GHz	255 MHz	-174 dBm	-135 dBc/Hz
N9040B UXA Signal Analyzer 3 Hz to 50 GHz	8.4, 13.6, 26.5, 44, 50 GHz Mixers to 1.1 THz	25 standard 40, 255 510 MHz, 1 GHz	255, 510 MHz	-174 dBm	-136 dBc/Hz
N9030B PXA Signal Analyzer Multi-touch, 2 Hz to 50 GHz	3.6, 8.4, 13.6, 26.5 32, 44, 50 GHz	25 MHz Standard 40, 85, 125, 160 MHz	85, 160, 255 510 MHz	-174 dBm	-136 dBc/Hz
N9020B MXA Signal Analyzer Multi-touch, 10 Hz to 50 GHz	3.6, 8.4, 13.6 26.5, 32, 44, 50 GHz	25 MHz Standard 40, 85, 125, 160 MHz	85, 125, 160 MHz	-172 dBm	-114 dBc/Hz
N9010B EXA Signal Analyzer Multi-touch, 10 Hz to 44 GHz	3.6, 7, 13.6, 26.5, 32, 44 GHz With mixers up to 1.1 THz	Standard 25, 40 MHz	None	-172 dBm	-109 dBc/Hz
N9000B CXA Signal Analyzer Multi-touch, 9 kHz to 26.5 GHz	3, 7.5, 13.6, 26.5 GHz	10 MHz Standard 25 MHz	None	-163 dBm	-110 dBc/Hz
N9030A PXA Signal Analyzer 3 Hz to 50 GHz	3.6, 8.4, 13.6, 26.5, 43, 44 50 GHz With mixers up to 1.1 THz	25 MHz Standard 40, 85, 160 MHz	85, 160 MHz	-171 dBm	-132 dBc/Hz
N9020A MXA Signal Analyzer 10 Hz to 26.5 GHz	3.6, 8.4, 13.6, 26.5 GHz With mixers up to 1.1 THz	25 MHz Standard 40, 85, 125, 160 MHz	85, 125, 160 MHz	-172 dBm	-114 dBc/Hz
N9010A EXA Signal Analyzer 10 Hz to 44 GHz	3.6, 7, 13.6, 26.5, 32 44 GHz With mixers up to 1.1 THz	Standard 25, 40 MHz	None	-170 dBm	-170 dBm
N9000A CXA Signal Analyzer 9 kHz to 26.5 GHz	3, 7.5, 13.6, 26.5 GHz	10 MHz Standard 25 MHz	None	-163 dBm	-110 dBc/Hz
M9290A CXA-m PXIe Signal Analyzer 10 Hz to 26.5 GHz	3, 7.5, 13.6, 26.5 GHz	10 MHz Standard 25 MHz	None	-163 dBm	-110 dBc/Hz
N9038A MXE EMI Receiver 3 Hz to 44 GHz	3.6, 8.4, 26.5, 44 GHz	0 standard, 25, 85 MHz	85 MHz	-167 dBm	-114 dBc/Hz

BLUETOOTH SMARTWATCH

f20

- Answer/make phone calls
- Heart rate monitoring
- Blood pressure/oxygen monitoring
- Sleep monitoring
- Multiple Sport Modes



SMARTWATCH
SMARTWATCH
SMARTWATCH
SMARTWATCH

1.69"	IPS screen
240*280	Superretinal screen
IP67	Waterproof
7 DAY	Daily usage mode battery life
5.0	Bluetooth version




SHENZHEN WANGYI INTELLIGENT CO., LTD

Tel : +86 18682272090
 Add : No.7 Jinkeng North Road, the Nanling Mountain Village Community, Nanwan Street, Longgang District, Shenzhen, Guangdong, China



PROVIDE ALL KINDS OF ELECTRONIC PRODUCTS
 GIVE YOU MORE COMFORTABLE EXPERIENCE

提供各类电子产品,给你更多舒适体验.



TMX-501

USB2.0

Easily compatible with a variety of file images



TMX-126

BLUETOOTH HEADSET
蓝牙耳机



TMX-232

AUDIO CABLE 音频线



TMX-607

PHONE CASES 手机壳



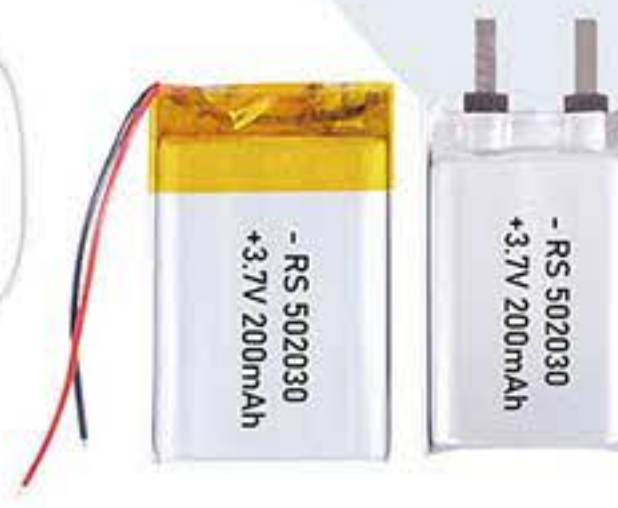
TMX-311

ADAPTER 适配器



TMX-715

POWER BANK 移动电源



TMX-812

BATTERIES 电池



TMX-127

HANGING HEADPHONES
挂脖耳机



TMX-128

HEADSET
头戴耳机



TMX-129

WIRED HEADSET
有线耳机

Contact : Mr. Yu +86 13148551828 (WeChat with the same number) 联系方式 : 余先生 +86 13148551828 (微信同号)

SANAG M11

Small body, big volume

“ 360° omnidirectional sound
Surging bass
Small and easy to grasp ”

5W
strong power

52mm
loudspeaker



enjoy time

Colourful Appearance Options



BRITISH BRAND + IMPORTED CRAFTSMANSHIP

Founded in London, England, adhering to the aesthetics of New England craftsmanship, it aims to let the public feel the avant-garde design of Great Britain.



BIG SPEAKER + INDEPENDENT BASS DIAPHRAGM

5W high-power speaker + 52mm large bass diaphragm, high volume does not break the sound, enjoy the shocking 3D stereo sound.



LARGE CAPACITY BATTERY + LONG PLAY

1800mAh battery and low-power circuit design, about 12 hours of long-lasting battery life, can listen to more than 120 songs continuously.

SANAG aims to combine the practicality and creativity of products to provide every consumer with high-quality, trendy, fashionable and creative digital products, so that consumers can enjoy a smart and quality life.

sanag

WWW.SANAG-UK.COM

400-8838-248

Worry about your loved one's health? Maybe you need a **smartwatch**

Guard him/her with you~



- View Weather
- Heart rate monitoring
- answer the phone
- see information
- Sports mode



SMART CALL WATCH

TYPES OF SMARTWATCHES

ADULT SMARTWATCH、ELDERLY SMART WATCH、CHILDREN'S POSITIONING SMART WATCH ...

SPORTS MODE × **HEALTH MONITORING** × **ALWAYS FOLLOW** × **ALWAYS ONLINE**



WITH THE DEVELOPMENT OF MOBILE TECHNOLOGY, MANY TRADITIONAL ELECTRONIC PRODUCTS HAVE ALSO BEGUN TO ADD MOBILE FUNCTIONS, SUCH AS WATCHES THAT USED TO ONLY WATCH TIME. NOW THEY CAN ALSO BE CONNECTED TO THE INTERNET THROUGH SMART PHONES OR HOME NETWORKS TO DISPLAY CALL INFORMATION, TWITTER, NEWS FEEDS, WEATHER INFORMATION AND OTHER CONTENT.

SHENZHEN FUMNUO TECHNOLOGY CO., LTD

MOD: +86 133 0293 0545(MR.WANG)

ADD: 3001B, SEG PLAZA, NO. 1002, HUAQIANG NORTH ROAD, FUQIANG COMMUNITY, HUAQIANG NORTH STREET, FUTIAN DISTRICT, SHENZHEN

BLUETOOTH CLOCK SPEAKER

WIRELESS CHARGE / CLOCK ALARM CLOCK / BLUETOOTH SPEAKER



HIFI SOUND
QUALITY



BLUETOOTH
CONNECTION



360° SURROUND
SOUND



WD-100

DONGGUAN CHUANGLIAN TECHNOLOGY CO., LTD

ADD: 3RD FLOOR, BUILDING 3, URBAN ZHIGU, NO. 19 JINPENG ROAD, FENGGANG TOWN,
DONGGUAN CITY, GUANGDONG PROVINCE

TEL: +86 137 1517 9844 (Mr.shi)



alibaba

RGB GRADIENT ATMOSPHERE LIGHT



light yellow



Candy powder



Glow Blue



Deep Purple

THE LATEST MULTI IN ONE BLUETOOTH AUDIO SYSTEM

ENJOY LEISURE TIME

WD-500



Wireless
Bluetooth



Alarm
clock



Telephone
hands-free



wireless
charge



usb
charging



TF
card



fm
radio



Horizontal and
vertical placement



FUNCTION

EZON INTELLIGENT SPORTS

Smart sports watch, focusing on sports technology brands



ABOUT US

FOUNDED IN 2008

EZON (Chinese name: Yizhun), founded in 2008, with its R&D headquarters in China, was founded by Mr. Chen Zuyuan. As a professional sports technology brand, EZON integrates sports and technology, always adheres to the user experience as the core, and is committed to providing users with more scientific and professional wearable smart products. It is a national sports industry demonstration project.



RUNNER 6



TRANNING 935



RUNNER 3



HEART RATE ARMBAND



HEART RATE BELT C009



CLIMBING TABLE H001

EZON 400-111-6865

CUSTOMER SERVICE HOTLINE

Tel: (+86)755-83526228 Fax: (+86)755-83526278
Address: 23A, Haiying Building, Rainbow Xindu, Caitian Road, Futian District, Shenzhen



BLUETOOTH TRUE WIRELESS EARPHONES

Mould Manufacturing Professional Design Services



PLASTIC PRODUCTS MANUFACTURING
HARDWARE MANUFACTURING



NEW



NEW



GUANGDONG IDK MOULD TECHNOLOGY CO., LTD

Mob: +86 138 2728 1648 (Mr. Chen) / +86 132 6661 8825 (Mr. Wen)

E-mail: chen hong@idkmold.com / 949358984@qq.com

Add: Room 101, Building 3, No. 5, Langxie East Street, Chang'an Town, Dongguan City, Guangdong Province

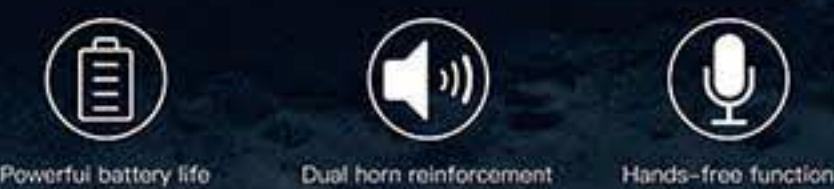


Mr. Wen WeChat

MINIMALIST STYLE FABRIC ART

BLUETOOTH SPEAKER

MINIMALIST FABRIC BLUETOOTH SPEAKER



Powerful battery life Dual horn reinforcement Hands-free function



MULTI CLOCK
COLOR SELECTION



MINIMALIST STEREO SURROUND SOUND COLORFUL RGB LIGHT BLUETOOTH 5.3

BLUETOOTH AUDIO

ADD JOY TO LIFE



RADIO STATION

ENJOY TIME WITH THE SOUND AND MOVEMENT

FM RADIO

NOT JUST LISTENING TO MUSIC

MULTIPLE COLORS

ENJOY DIFFERENT STYLES OF LIFE

SHENZHEN CHENRUIJIA PLASTIC ELECTRONIC TECHNOLOGY CO., LTD

Tel: +86 18670603853 (Mr. li)

Web: <https://chenruijia0755.1688.com>

Add: Room 401B, 4th Floor, Building E, Tong'an Pharmaceutical Industrial Park, No. 124 Yonghe Road, Tangwei Community, Fuhai Street, Bao'an District, Shenzhen City, Guangdong Province

U True

- Hands free calling
- Comfortable to wear
- Superior sound quality
- Stand-by for long time

DOUBLE
MICENC

HIGH SOUND QUALITY

P6 ANC



P5



NOISE
CANCELLING
HEADPHONES

HIGH SOUND QUALITY

P7



P2 ANC
MAKE EACH PRODUCT CAREFULLY
LISTEN TO THE BEAUTIFUL SOUND



P4 ANC
BRIGHT DESIGN STABLE AND
COMFORTABLE WEARING



Shenzhen Utrue Technology Co., Ltd.

Mob: +86 18025540508 (Mr.Lu) QQ: 2123244517 E-mail: utrue@sz-utrue.com Web: www.sz-utrue.com
(WeChat same number)

Add: 201, Building A, 1970 Cultural and Creative Park Minzhi Street, Longhua District, Shenzhen



WeChat



高保真
HIGH FIDELITY

LISTEN TO GOOD
MUSIC MOMENTS

Out of the sound quality immersive



GBZ-23

SOPHISTICATED LOOK
ERGONOMIC DESIGN



GBZ-21

GBZ-22

GBZ-24



Comfortable to wear



Three-button remote control



Pure sound



Noise isolation

RECLINING INTO THE EAR FOR A COMFORTABLE FIT

SUPPORT IPHONE15



GBZ-25

GBZ-26

GBZ-27

GBZ-28

GBZ-29



GBZ-30

GBZ-31

GBZ-32

GBZ-33 3.5 Type-C

GBZ-34



GBZ-05

GBZ-07

GBZ-08

GBZ-09

GBZ-10



GBZ-12

GBZ-13

GBZ-15

GBZ-16

GBZ-18

GBZ-19

DONGGUAN GAOBAOZHEN ELECTRONICS CO., LTD.

E-mail: august_liu8031@126.com

Mob: +86 13416702820(Mr.Liu) / +86 18617256429(Mr. Han)

Add: 4th Floor, No. 25, Hongqi Road, Hengli Town, Dongguan City



Wechat



Wechat



A TOTAL OF 405 PATENTS HAVE BEEN GRANTED THERE ARE 67 INVENTION PATENTS (3 ABROAD) AND 119 HEADPHONE-RELATED PATENTS



Silencer chamber
Noise floor 7.9dB,
test frequency range: 50-20KHz



Listening room
Noise floor 21.8dB, reverberation time 0.3-0.4s, The test range is 125Hz-8KHz



CNAS National Laboratory
Assessment by the China National Accreditation Service for Conformity Assessment

COMPANY PROFILE

Yingtong Communication Co., Ltd. was established in December 1999 and successfully listed on the main board of The Shenzhen Stock Exchange on April 13, 2017 (stock code: 002861). At present, it has 10 subsidiaries, 6 production bases, 4 research and development centers, and a management training center, One CNAS Certified Laboratory.

For more than 20 years, the company has focused on the research and development, production and sales of various types of smart headphones, wireless charging products, data lines, communication cables and intelligent hardware products, which are mainly used in mobile communication terminal products, personal computers, audio and video playback equipment and other intelligent terminal products. The company is committed to the development and research of new products, new materials, new technologies, new equipment, etc., and has obtained a total of 405 authorized patents, including 67 inventions (including 3 foreign patents) and 119 headphone-related patents.

In the future, the company will always adhere to the development of excellent talents, scientific and technological innovation and corporate culture, and strive to become the world's leading intelligent audio product overall solution service provider!



Aerial view of Hubei Yingtong & Yingxin



Aerial view of the new factory in Dongguan Park



Dongguan Yingtong
Dongguan Kailai



Hubei Yingtong
Hubei Yingxin



Guangxi Yingtong



Huizhou United Rhyme



Vietnam Yingtong



India Yingtong



Wuhan Yingtong



Yingtong Management
Training Center



R&D Center in Dongguan



R&D Center in Wuhan



R&D Center in Xianning



R&D Center in California, USA

SMART HEADSET SERIES



YT-TWS018
ANC/ENC earphones

YT-TWS016
Belle

YT-OWS006
OWS earphone

YT-OWS006
Traffic earphones

YT-NECK002
NECK beans



YT-TWS010
OWS Headphones for children



YT-W001
ANC Headset



YT-S001
Neck Wearing Bluetooth ANC Headset



YT-N002
Neck Hanging Bluetooth Sports Headset

INTELLIGENT SPEAKER



HIFI LOUDSPEAKER BOX

KSONG SOUNDBAR

JUKEBOX LOUDSPEAKER BOX

OUTDOOR KARAOKE PORTABLE SPEAKER

DATA TRANSFER SERIES



TYPE C TO TYPE C 2.0 CABLE

TYPE C TO LIGHTNING C94 CABLE

TYPE C TO TYPE C 2.0 CABLE

HDMI 2.1

TYPE C 3.1

VR DATA TRANSFER MODULE COMPONENTS

HIGH TEMPERATURE RESISTANT SILICONE DATA CABLE

COMMUNICATION CABLE SERIES



HIGH ELASTIC BRAIDED THREAD

AR / VR LINE SEMI-FINISHED

VR DATA CABLE

TPE AR / VR BUILT-IN CABLE

LEATHER BRAIDED THREAD

SONIA®

HANIZU®



Intelligent noise reduction



Original sound presentation



Stable Bluetooth connection

Bluetooth
HZ-BT623



Bluetooth
HZ-BT712



Bluetooth
HZ-BT711



SHANTOU CHAOYANG DISTRICT FENGXING ELECTRONICS FACTORY

Mob: +86 134 3331 3636(Mr.Zhang) E-mail: 836692888@qq.com
Add: Fengxing Electronics Factory, Qianjin Road, Gurao Town, Chaoyang District, Shantou City



Alibaba



WeChat

IMMERSIVE AUDIO EXPERIENCE

LISTEN TO THE SOUND OF THE WORLD

Bluetooth

HZ-BT990



Bluetooth

HZ-BT811



Bluetooth

P9 Pro MAX



Bluetooth

HZ-BT613



Bluetooth

HZ-BT611



Bluetooth

HZ-BT636



Bluetooth

HZ-BT368



Bluetooth

HZ-BT638



HIFI sound quality

LISTENING TO THE SOUNDS OF NATURE



Tasteful and Clean
Wear Stylishly
Professional Sound Quality



Excellent analysis and clear hierarchy Present richer music details



YY-005

LIGHTNING/TYPE-C/3.5 PLUG
HEADPHONES

YY-031

LIGHTNING/TYPE-C/3.5 PLUG
HEADPHONES

YY-010

LIGHTNING/TYPE-C/3.5 PLUG
HEADPHONES



YY-032

YY-033

YY-034

YY-035



YY-036

YY-037

YY-038

Dongguan Yueyin Electronic Technology Co., Ltd. was established in 2010, is a collection of development, production, sales in one of the mobile phone headset enterprises, the company covers an area of more than 1,000 square meters, 3 factories in the mainland, more than 200 employees, the company has a complete management system, can be customized according to customer needs, specializing in the production of Mp3 headphones, mobile phone headphones, sports Bluetooth headphones, halterneck Bluetooth headphones, headphone cable semi-finished products, etc.



DONGGUAN YUEYIN ELECTRONIC TECHNOLOGY CO., LTD.

MANAGING DIRECTOR: MR. WAN +86 18676932250
BUSINESS MANAGER: MR. ZHANG +86 18781807992
BUSINESS: MR. WAN +86 13751443954 E-MAIL: 675119730@qq.com
ADDRESS: DONGGUAN CITY, SHITAN PUJIANGYUAN ROAD NO. 21



WECHAT QR CODE



HiFi Amplifier Adapter



CT6 Digital Audio Adapter
CX31993 DAC Chip
PCM 32bits/384KHz
8 strands silver plated wire



CT6L Digital Audio Adapter
CX31993 DAC Chip
PCM 32bits/384KHz
8 strands silver plated wire



CT6PRO/PROL Digital Audio Adapter
CX31993 DAC Chip
MAX97220 AMP Chip
PCM 32bits/384KHz
8 strands silver plated wire



C2C Fast Charging Cable
PD60W(20V 3A)
Charging + data transfer
Nylon woven, strong and durable



C2L Lightning fast charging Cable
PD18W (9V 2A)
Charging + data transfer
Nylon woven, strong and durable



A2C fast charging Cable
PD22.5W (4.5V 5A)
Charging + data transfer
Nylon woven, strong and durable

Adapter



TG1 OTG adapter
Apple 3959 chip
Support mobile phone/computer/headset conversion Support mouse and keyboard/charging/file transfer



A2C USB computer adapter
USB AM to TypeC Female
Charging/Data transfer/Music/car



Contact Us
联系我们

Miss Huang
13538400360 (Wechat)
xiaojie_audio@163.com
Room 403, Building 3, 78 Xihu Wenquan South Road
Shilong Town, Dongguan City, Guangdong Province

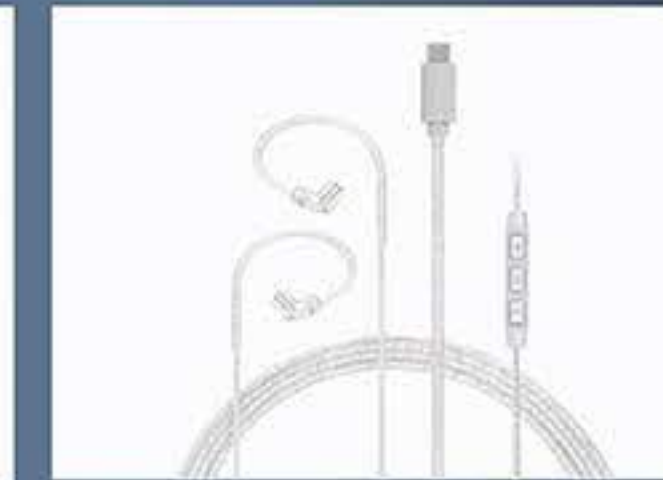
HiFi Audio Products



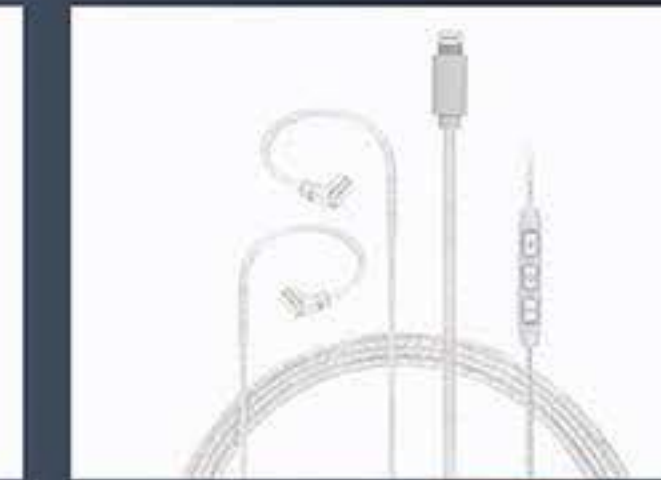
PJ2+ 3.5mm upgrade cable
5N OFC silver plated conductor
Single button, QDC interface



PJ3 TypeC upgrade cable
Chip:KT0211L(24bits 96KHz)
5N OFC silver plated conductor
Three button silicon mic, QDC interface



PJ4 TypeC upgrade cable
Chip:BES3001SP(32bits 384KHz)
5N OFC silver plated conductor
Three button silicon mic, QDC interface



PJ5 Lightning upgrade cable
Chip:C100(24bits 48KHz)
5N OFC silver plated conductor
Three button silicon mic, QDC interface



JC20S 3.5mm upgrade cable
Twisted 8 strands silver plated wire,308 core
Single button, QDC interface



PJ2 Black gold earphone cable
Oxygen-free copper, single button
QDC, 0.78 square interface,
0.78 convex interface



AST HiFi earphone
Double magnetic double cavity moving coil unit
Transparent color
transparent black, blue



ASN HiFi earphone
Double magnetic double cavity moving coil unit
Black, white, blue

Digital Audio Adapter



CT1 TypeC Audio adapter
Chip: AB136D
Decoding rate: 16bits 48KHz
Material: Plastic



CT2PRO TypeC Audio adapter
Chip: KT02H20
Decoding rate: 32bits 384KHz
Material: metal



CT3PRO TypeC Audio adapter
Chip: SPV4040
Decoding rate: 32bits 384KHz
Material: metal



CT4PRO TypeC Audio adapter
Chip: CX31993
Decoding rate: 32bits 384KHz
Material: metal



CT4PROL Lightning Audio adapter
Chip: CX31993
Decoding rate: 32bits 384KHz
Material: metal



CT5PRO TypeC Audio adapter
Chip: ALC5686
Decoding rate: 32bits 384KHz
Material: metal



CLM TypeC Male to Lightning Female
Support music, call, line control
Material: Metal



AUX08L Apple Audio cable
C101 chip, MFI certified
Length: 1.2 m
Material: Metal



XL1 Lightning audio adapter
C100 chip
Fully functional for all Apple models
Material: Metal



XL1 Lightning audio adapter (Simplicity)
C100 chip. Material: plastic
Fully functional for all Apple models



ZT1 TypeC Audio adapter
Chip: AB136D
Decoding rate: 16bits 48KHz
Material: Plastic



ZT2 TypeC audio adapter
Chip: KT0200
Decoding rate: 24bits 96KHz
Material: Plastic



ZT4PRO TypeC audio adapter
Chip: CX31993
Decoding rate: 32bits 384KHz
Material: Metal



ZT5PRO TypeC audio adapter
Chip: ALC5686
Decoding rate: 32bits 384KHz
Material: Metal

Strength factory | stable delivery

Sufficient stock, no worries after sale

Undertake OEM/ODM orders

ac2

XIAOYUN ELECTRONIC TECHNOLOGY

- Comfortable affixed ears
- Omnidirectional stereo sound
- Soft, light and painless
- ANC noise reduction function

GAME E-SPORTS HEADSET

- ④ CAVITY VOICE
- ④ NUCLEAR POWER
- ④ SPEAKERS ORIGINAL
SOUND PRESENTATION MUSIC FEAST



S4

S5

S8



S2
SLEEP HEADSET
COLOUR ○



H5
SMART HEADSET
COLOUR ●



S3
SLEEP HEADSET
COLOUR ●



Y7



S1

东莞市小芸电子科技有限公司
DONGGUAN XIAOYUN ELECTRONIC TECHNOLOGY CO., LTD.

Mob: +86 13825773618(Mr.Ma)(WeChat same number) / +86 18520974141(Mr.Ma)(WeChat same number)
Tel: +86 0769-83067336 QQ: 1845753501 / 3256392843 E-mail: mkb456@foxmail.com
Web: <https://shop1462427472654.1688.com> Add: Mingzhu Industrial Zone, Shijie Town, Dongguan City, Guangdong Province



WeChat



WeChat

EXPERIENCE HIFI SOUND QUALITY

 <p>PL01 COLOUR ●●●●</p>	 <p>A2-T COLOUR ●</p>	 <p>T4 Ear mounted wired sports headset COLOUR ○</p>
 <p>T10 COLOUR ●●</p>	 <p>Z810 COLOUR ●●</p>	 <p>TC06 COLOUR ●●</p>
 <p>Z802 COLOUR ●●●●</p>	 <p>Z806 COLOUR ●●</p>	 <p>AC5.0 COLOUR ●●</p>

DONGGUAN LU XUN ELECTRONICS TECHNOLOGY CO., LTD

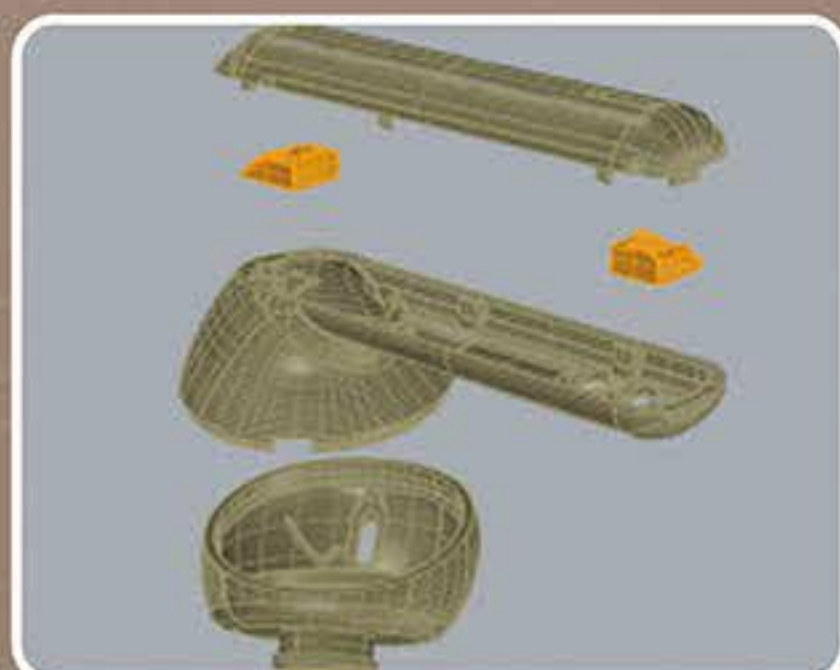


COMPANY PROFILE

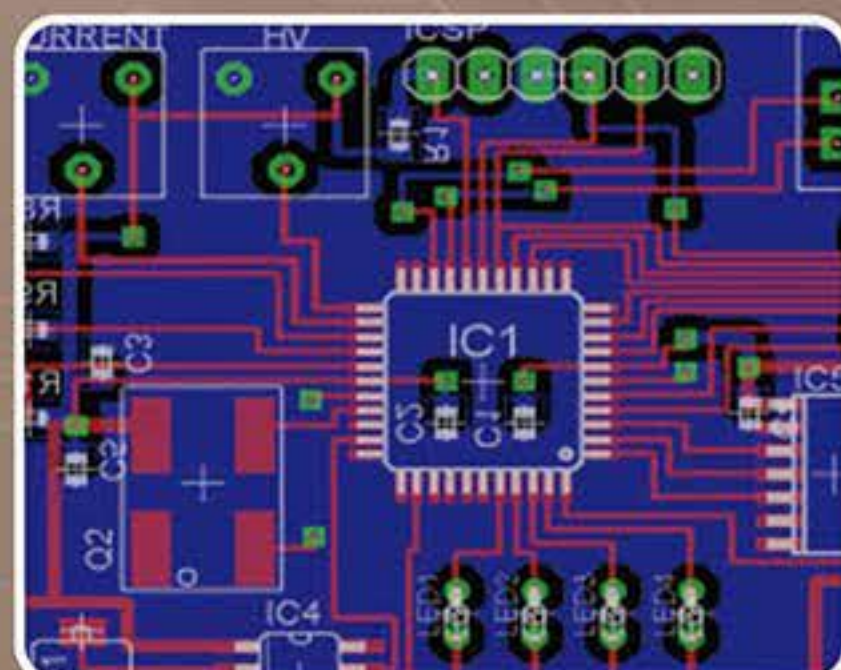
- Dongguan Lu Xun Electronics Technology Co.,Ltd. was established in 2016. Lu Xun integrates R&D, manufacturing, sales and services, and is one of the largest earphone manufacturer in China.
- Lu Xun Electronics specializes in development of fashionable, innovative and reliable earphone for customers. Lu Xun brings together a group of experienced designers and technicians. We own a number of product patents. At present, our main product line include TWS ANC, Bluetooth ANC, bluetooth headphones, gaming headsets, etc.
- Lu Xun has always been adhering to the concept of "customer-oriented, innovation-centred, quality-based". With quality products and prompt services we obtained high praises from domestic and foreign customers.



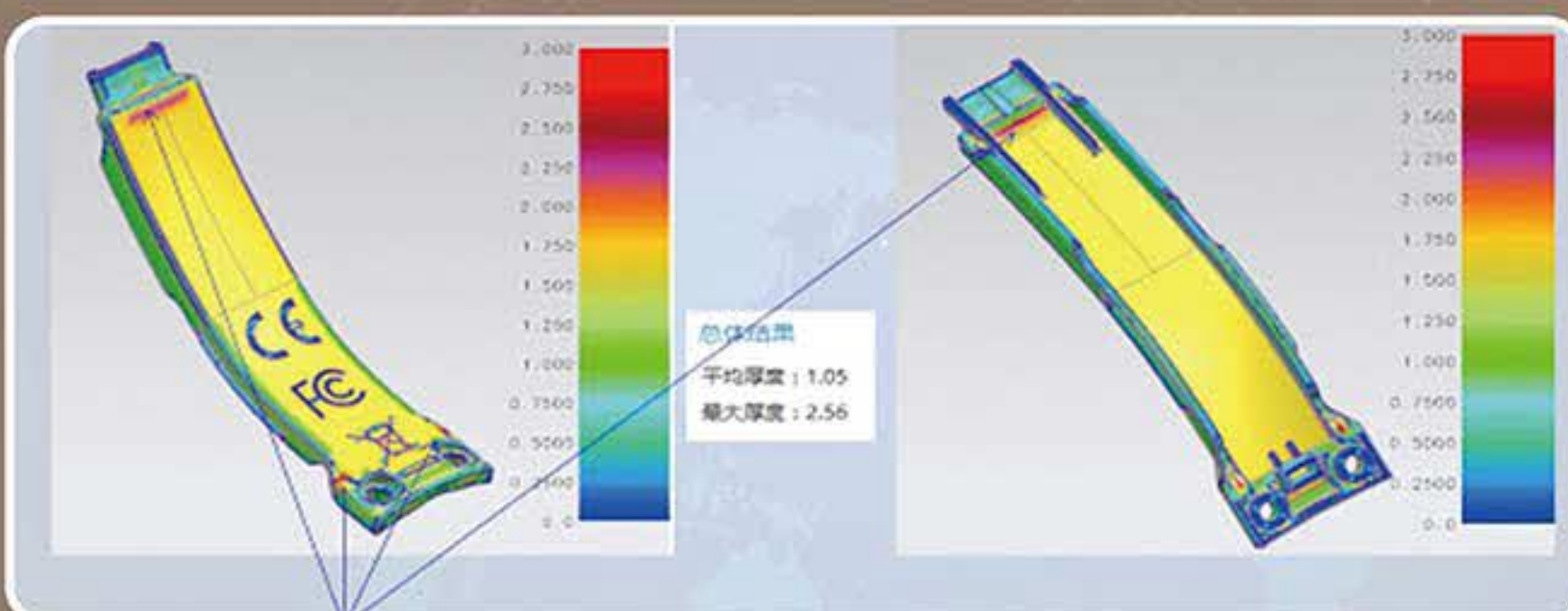
ID DESIGN



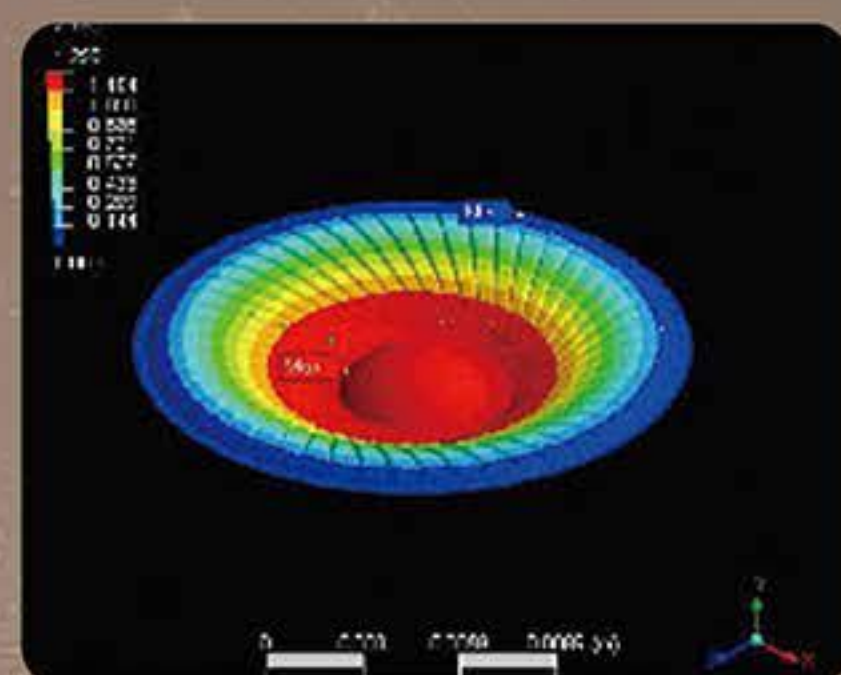
STRUCTURAL DESIGN



ELECTRONIC DESIGN



MOLD FLOW ANALYSIS



ACOUSTIC DESIGN AND SIMULATION ANALYSIS

NC06 Hybrid ANC+Dual MIC ENC TWS



1. With hybrid ANC (Active Noise Cancelling) technology to provide excellent noise cancellation and transparency experience.
 2. Powerful and crisp sound experience.
 3. Dual MEMS ENC (Environmental Noise Cancellation) for clear conversation
 4. Intelligent case with button for bluetooth reset and connection without open case
 5. With hall switch for auto on and easy to connect
 6. FPC antenna
 7. USB Type-C charging port
- Bluetooth Chipset: Airoha AB1562A
 ANC type: Hybrid (Feedforward & Feedback)
 ANC peak: -35dB
 Driver size: $\phi 10$ mm
 Battery in earbud: 45 mAh.
 Play time: ANC OFF 6 hrs, ANC ON 5 hrs
 Battery in case: 480 mAh. Provides 3 full charging circles for earbuds up to 24 hours play time



EN08 Dual MIC ENC TWS

1. Dual MEMS ENC (Environmental Noise Cancellation) for clear conversation
 2. With hall switch for auto on and easy to connect
 3. FPC antenna
 4. USB Type-C charging port
- Chipset: JL6973D8
 Driver size: $\phi 10$ mm
 Battery in earbud: 35 mAh.
 Play time: 7 hrs
 Battery in case: 300 mAh. Provides 3 full charging circles for earbuds, up to 21 hours play time



Contact: Mr. Wang Tel: +86-0769-81372977

Address: Dongguan City Shipai Town Temple Side Wang Yongxing Road No. 8

Mob: +86 15818380078 Email: bob@lusaudio.com

site: www.lusaudio.com



COMPANY PROFILE

Dongguan Tesheng Electronic Technology Co., Ltd. was established in 2009 and is located in Shijie Town, Dongguan City, Guangdong Province. It is a factory specialized in the research and development, production and sales of various types of earphones, telescopic cables, audio cables and other electronic products.

We have advanced testing equipment and complete production machinery, a complete management system, senior R&D engineers and a professional production team. product variety is complete, the quality is good, the price is reasonable, widely used in automobiles, mobile phones, MP3, computers and other electronic products. Adhering to the business philosophy of "quality first, integrity first", we wholeheartedly provide customers with high-quality products and efficient services, and are willing to cooperate in various ways such as OEM/ODM.

We sincerely welcome business friends from all walks of life to visit, guide and negotiate business, and look forward to establishing friendly and cooperative business contacts with you and achieving a win-win goal!



BLUETOOTH HEADSET MORE BEAUTIFUL MUSIC QUALITY



LS-LY-360



LS-LY-328



LS-LY-311



LS-LY-335



LS-LY-313

LS-EI-131



LS-EP-01HIFI Patent Product



LS-EM-01HIFI



LS-EM-971



LS-EM-1003



LS-EI-135



LS-EM-972



Dongguan Tesheng Electronic Technology Co., Ltd

Mob: +86 132 6686 3686 Jarson +86 138 2913 0970 Aaron E-mail: lsts2015@vip.163.com
 Add: NO.272 Tongde Road, Liuwu Industrial District, Shijie Town, Dongguan City, Guangdong Province, China-523303



Official website



Alibaba

• EXPLORE BLACK TECHNOLOGY • EXCELLENT QUALITY •

BONE CONDUCTION BLUETOOTH HEADSET

Bluetooth version: Bluetooth 5.3
 Night running light: support
 Main chip: AC7006F
 Waterproof grade: IP68
 Battery capacity: 180mAh
 Local storage: 32G
 Appearance color: black, gray black, red black



P8 →



Bone conduction



Imported chips



Movement dedicated



Long battery life



P11

FAST CHARGING, SUPPORTS ENC CALLS

(Charge for 5 minutes, use for 2 hours)
 Patent number: ZL 2022 3 0549678.0

Type: P11 Fast charging bone conduction Bluetooth headset
 Bare metal weight: 23g
 Appearance size: 130x95x48mm (reference)
 Main chip: AC7006F

Bluetooth frequency band: 2.4GHZ-2.48GHZ
 Waterproof grade: IPX5
 Fast charging: supports 3C charging
 ENC call: support
 Local storage: support

Bluetooth distance: more than 10 meters
 Battery capacity: 160mAh
 Standby time: 160 hours
 Charging time: 0.5h
 Play time: 8H (80% volume)
 Appearance color: Black gray, gray white

GW1 WIRELESS BONE CONDUCTION BLUETOOTH HEADSET

Bluetooth version: Bluetooth 5.3
 Word cycle bin Charging cycles: 4
 Main chip: AD6973A

Appearance color: black and red (customized by customer service)
 Waterproof grade: IPX4

Single earphone Play time: about 3.5h
 Bluetooth frequency band: 2.4GH Z-2.48GHZ
 Battery capacity: 700mAh



OW5

WIRELESS BLUETOOTH EARPHONES

Bluetooth version: Bluetooth 5.4
 Type: Wireless Bluetooth earphones
 Model: OW5
 Dual earphone bare weight: 7.5g (approx.)
 Bare metal weight of charging compartment: 58g (approx.)
 Bare metal weight of the whole machine: 73g (approx.)
 Headphone size (length, width, height): 55*43.5*13mm
 Charging compartment size (length, width, height): 82.5*66.5*25.5mm

Main chip: AD7006F8
 Bluetooth frequency band: 2.4GHZ-2.48GHZ
 Waterproof grade: IPX5
 Bluetooth distance: ≥10 meters
 Headphone battery capacity: 40mAh
 Charging compartment battery capacity: 620mAh
 Charging current: 5V/500mA
 The number of charging cycles in a single charging box: 6

Charging box standby time: 500 hours
 Charging time: 1.5h
 Single earphone playback time: about 4h
 Appearance color: black, White
 Core selling points:
 Lightweight, silicone fit, ENC calling



WELCOME TO CONTACT AND CONSULT

Contact: Mr Ni Mob: +86 13510634753 (WeChat same number) E-mail: Nick@gdbone.com QQ: 1565874023

SHENZHEN GUDE ELECTRONIC TECHNOLOGY CO., LTD.

Web: <https://shop248sv3839v997.1688.com>

Add: 401, Building B1, Gaojian Industrial Park, Fuhai Street, Bao'an District, Shenzhen



WeChat

bosdd®



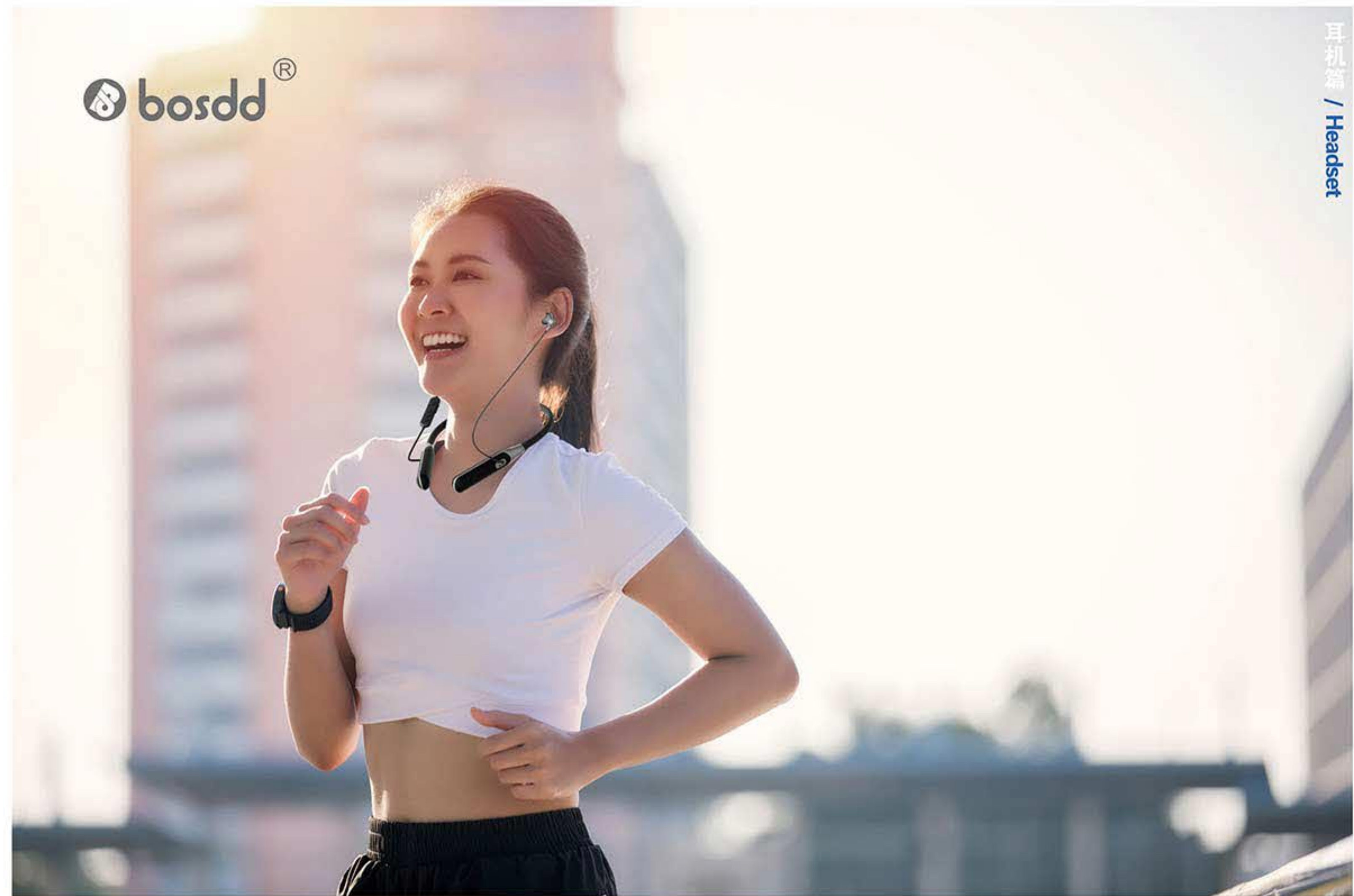
B2 蓝牙2.4G



M21

600mAh超长续航 LED电量显示 来电震动提醒

bosdd®



M23

B3

M22

M16



M29

M28

M10

M15

W08

Dongguan Gen.M Intelligent Technology Co., Ltd
Add:No. 177, Dongyuan Avenue, Shipai Town, Dongguan City, Guangdong Province, China
Phone:+86 18680061399 (Mr Lu) Email:100186308@qq.com
Phone:+86 13622678120 (Ms Li) Email:3441222677@qq.com



Mr. Lu WeChat



Ms. Li WeChat

Dongguan Gen.M Intelligent Technology Co., Ltd
Add:No. 177, Dongyuan Avenue, Shipai Town, Dongguan City, Guangdong Province, China
Phone:+86 18680061399 (Mr Lu) Email:100186308@qq.com
Phone:+86 13622678120 (Ms Li) Email:3441222677@qq.com



Mr. Lu WeChat



Ms. Li WeChat

DYS 江西趣悦声

LISTEN TO THE EAR SPORTS NECKBAND

TRUE STEREOSCOPIC BATTERY | **180 mAh**
THREE-DIMENSIONAL SURROUND
EXPLORE THE PATH OF MOVEMENT



EXTREME EXPERIENCE UNLIMITED LISTENING



180 degree rotation, left ear and right ear

MORE PRIVATE MODELS

CREATE A SERIES OF AUDIO FOR THE BRAND EXPLORE THE PATH OF MOVEMENT



JIANGXI QUYUESHENG ELECTRONICS CO., LTD

Office Add: Building 12, No. 68, Hongshi Road, Yantian, Fenggang Town, Dongguan City, Guangdong Province

Production Add: Quyuesheng Electronics, Gubu Town, Yugan County, Shangrao City, Jiangxi Province



Mr. Zou +86 18170000770



Mr. Liu Development Procurement



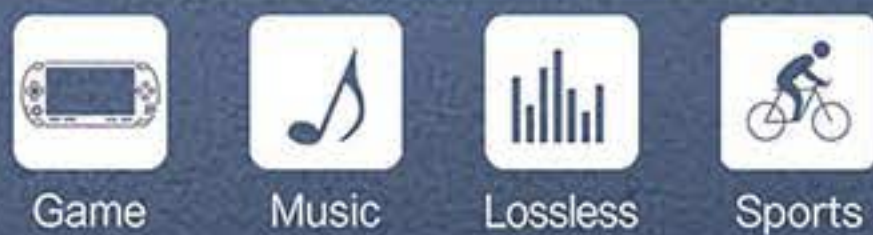
Miss Liu Internal Order Business

MOBILE PHONES, TABLETS,
COMPUTERS, TVS CAN BE USED WITH BLUETOOTH



FULL COMPATIBILITY
**YOU CAN USE IT IF YOU
HAVE BLUETOOTH**

S3



ANTI-SWEAT NEW UPGRADE EXERCISE WITHOUT FEAR OF SWEAT

- ① Multi-process strict design
- ② Effectively prevent the erosion of rain sweat
- ③ Using easy to clean materials
- ④ Gentle rub that clean as before

ENJOY EXCITING MOMENTS ANYTIME
**BLUETOOTH EARPHONES
WG005**



T021



HUIZHOU EIGHT CUBIC TECHNOLOGY CO., LTD.

Mob: +86 136 5278 2446(Miss.Chen) E-mail: 2896844609@qq.com
Add: 5th Floor, Building B, Baolitong Building, East Industrial Avenue
Shiwan Town, Huizhou City



WeChat



Alibaba

YOUR
MUSIC
NOISE FREE



Q-014 ● ●
WHITE/BLACK

ACTIVE NOISE CANCELLING

ANC Bluetooth Magnetic attraction

Q-015

移动电源 蓝牙音箱 蓝牙耳机
三合一

POWER BANK, BLUETOOTH SPEAKER,
BLUETOOTH HEADSET 3-IN-1



- 款式多样 Diverse styles
- 精湛工艺 Exquisite craftsmanship
- 多彩工艺 A variety of colors
- 品质保证 Quality assurance



Q-011 RED



Q-011 BLACK



Q-012 SILVER



Q-013 ○ ● ●
WHITE/NAVY BLUE/BLACK



SHANTOU QIANGZHISHENG PLASTIC ELECTRONIC FACTORY

Mob: +86 13824496055 Mr.Liu (WeChat same number)

Add: Hengshan Industrial Zone, Gurao Town, Chaoyang District, Shantou City



WeChat



Enlink show shop app

东莞市狼歌电子有限公司

Dongguan Langge Electronics Co., Ltd.

Dongguan Langge Electronics Co., Ltd. is an enterprise integrating professional design, technology research and development, manufacturing and sales. The main audio products: game headsets, mobile phone headsets, Bluetooth headsets, noise reduction Bluetooth headsets, Bluetooth TWS and other products.

The company's products are ergonomically designed to bring a more comfortable experience. From the selection of materials to the design of the shape, we carefully craft the details and pursue the ultimate; while demanding the quality of the products, we pay attention to the combination of fashionable appearance and perfect quality. People-oriented, simple and fashionable design, natural and fresh colors, and strive to provide you with more comprehensive and high-quality products to every customer.



Company Plant



Staff Office



Production Line



Product Showcase



Product Showcase



Product Showcase

产品展示 Product display



YX15 RGB电竞手游耳机
RGB gaming headset



YX20 RGB电竞手游耳机
RGB gaming headset



T9 手游电竞耳机
Mobile gaming headphones



DR-58 头戴式蓝牙耳机
Bluetooth headset



DR-86 头戴式降噪蓝牙耳机
Noise-cancelling Bluetooth headset



DR-200 头戴式蓝牙耳机
Bluetooth headset

话务员, 客服, 呼叫中心专用头戴式蓝牙耳机

Bluetooth headsets for phone operators, customer service, call centers

2.4G/蓝牙5.2
2.4G/Bluetooth5.2



LG100

技术规格参数/Technical Specifications

喇叭直径/horn diameter	30mm
麦克风灵敏度/mic sensitivity	-48±5dB
输入阻抗/input impedance	32Ω
频响范围/frequency range	100-16kHz
蓝牙版本/bluetooth version	V5.2
指向性/directivity	单指向/unidirectional
电池容量/battery capacity	400mah
使用时间/service time	20h
充电时间/charging time	1-2h
蓝牙距离/service distance	≤20m
工作电压/operating voltage	1.5v
充电接口/Charging interface	Type-c

T200 单边话务耳机
Unilateral traffic earphones



T205 单边话务耳机
Unilateral traffic earphones



T210 单边话务耳机
Unilateral traffic earphones



Dongguan Langge Electronics Co., Ltd.

Address: Second floor, Lansenchang, Shiheng Avenue, Shipai Town, Dongguan City, Guangdong Province

Mob: +86 13682352180 WeChat: 13682352180

Tel: +86 0769-81702736

QQ: 171566835

E-mail: fob725@163.com

Alibaba Store: sxgoly.1688.com



Scan To Learn More



东莞市伟尔硅橡胶制品有限公司

Dongguan WeiEr Silicone Rubber Products Co., Ltd

公司简介 COMPANY PROFILE



Weir Silicone Rubber Products began in 2016, the predecessor of the company, is by family members from a set of equipment to start business and production. After continuous efforts to develop, Dongguan WeiEr Silicone Rubber Products Co. was officially registered in 2019.

In order to cope with the demand of customers' growing business, the company also continuously increase the investment in production equipment, and now the equipment has increased from the initial set of equipment, to five sets of equipment. The company has also established itself as a professional silicone rubber products company specializing in the development, production and sales of silicone products.

The company's main product categories are: all kinds of silicone ear cold/neck/headphones united line such as headphones around the silicone accessories, cell phone protective cover, silicone kitchenware, computer peripheral silicone accessories, silicone handicrafts, silicone watchband and silicone swimming accessories, and so on.

All of our products have the advantage of environmental protection and non-toxicity, and all of our products meet the requirements of environmental protection and other tests.

我们的企业文化 OUR CORPORATE CULTURE

• ENTERPRISE SPIRIT

SHARING, INTEGRITY, INNOVATION, PROGRESS

• BUSINESS PHILOSOPHY

QUALITY FIRST, CUSTOMER SATISFACTION, TO CREATE A WIN-WIN DEVELOPMENT PLATFORM FOR YOU AND HIM!

• MANAGEMENT PHILOSOPHY

RESULTS-ORIENTED, INSTITUTIONALIZED, STANDARDIZED

• SERVICE CONCEPT

MAXIMIZING VALUE FOR CUSTOMERS

• HUMAN RESOURCE PHILOSOPHY

BALANCE OF RESPONSIBILITIES AND AUTHORITY, PEOPLE-ORIENTED

• CORE VALUES

质量第一 QUALITY FIRST

忠诚友善 LOYALTY AND FRIENDLINESS

诚信经营 HONEST MANAGEMENT

爱岗敬业 LOVE AND DEDICATION TO WORK

遵纪守法 COMPLY WITH THE LAW

客户满意 CUSTOMER SATISFACTION

共同进取 JOINTLY ENTERPRISING

多方共赢 WIN-WIN SITUATION

开拓创新 PIONEERING AND INNOVATIVE

廉洁奉公 PERFORM DUTIES HONESTLY



专业硅橡胶产品制造商

Professional Silicone Rubber Products Manufacturer

专业专注, 全心服务
追求卓越, 尽善尽美

产品展示 PRODUCT DISPLAY



DONGGUAN WEIER SILICONE RUBBER PRODUCTS CO., LTD

Contact: Mr. Liang Mobile: +86 137 5143 5375 (Wechat same number)

Contact: Ms. Liang Mobile: +86 134 3454 6032 (Wechat same number)

Tel: 0769-86869579 Fax: 0769-86869509 E-mail: 1538927235@qq.com

Address: No.12, Fujiang 2nd Road, Hengjiang Village, Chashan Town, Dongguan City, Guangdong Province, China. QQ: 1538927235



Wechat

Wechat

MORADI

NEW DUAL WIRELESS GAMING HEADSET

2.4GHZ+ BLUETOOTH

- dual connection--2.4GHz+Bluetooth5.0,
- low latency ≤30ms,15m long distances
- multi-platform compatibility
- magic gaming sound quality
- noise canceling microphones

MD24

COLOUR: ●○



PROFESSION GAMING HEADSET



MD25 COLOUR: ●●

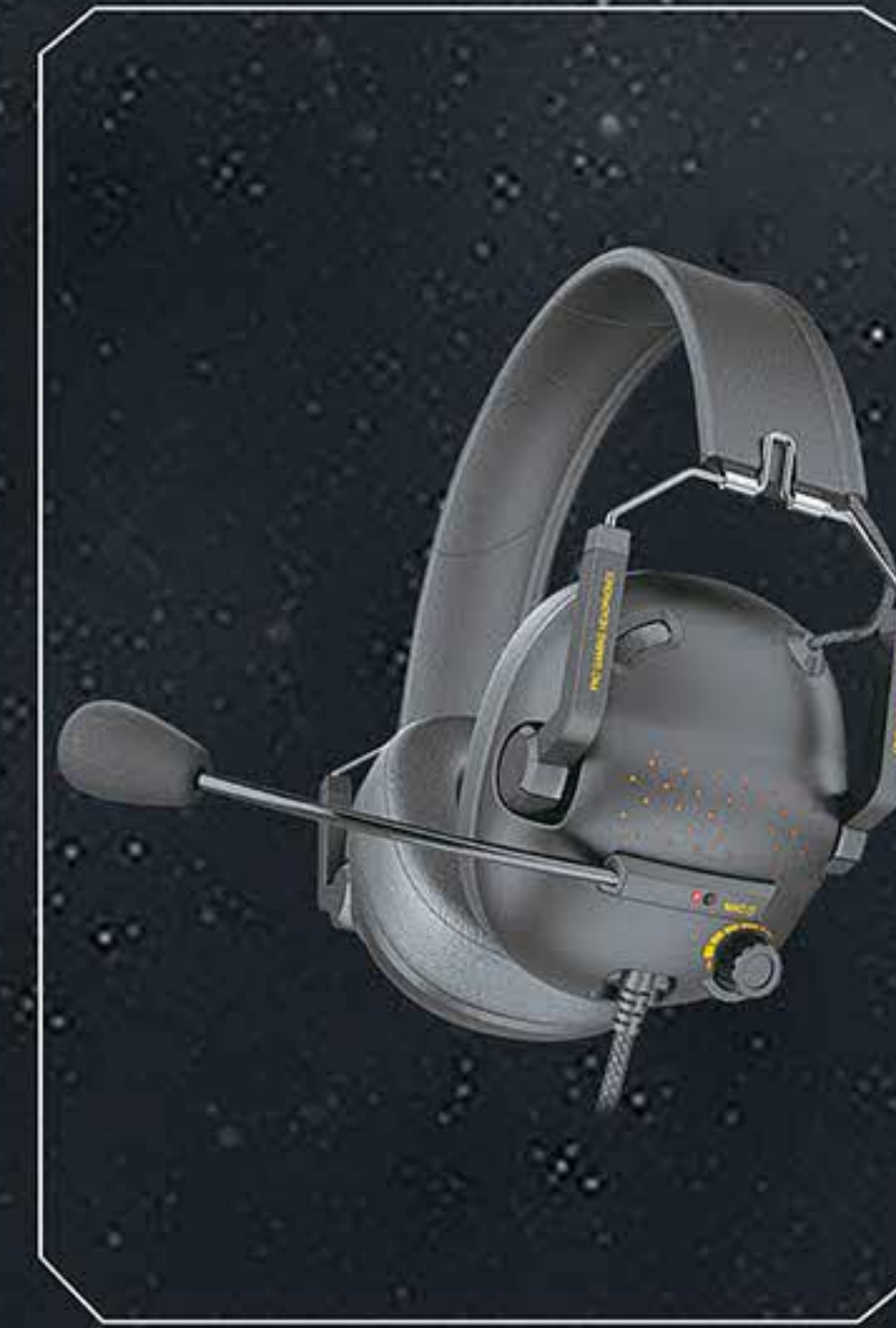


GAMING TACTICAL HEADSET

G200



MD20



G500



V12



V10

DONGGUAN MORADI ELECTRONIC TECHNOLOGY CO., LTD

Tel: Mr. Gan +86 18602066068 0769-81032220 Email: gjdy@126.com
 Address: Mingxin Science and Technology Park, No.138 Qiqiao Road, Qishi Town, Dongguan City
 Website: <http://www.dgmoradi.com>



Website

音你而来 YIN NI ER LAI



TWS-73



TWS-74

COLOUR: ● ●



TWS-72

COLOUR: ● ●

HIFI级音质 | 蓝牙5.3芯片 | 无感游戏延迟 | 高清通话无杂音



T11 | COLOUR ● ●



S510 | 新款无线蓝牙耳机
COLOUR ● ● ●

惠州市诚悦电子有限公司 HUIZHOU CHENG YUE ELECTRONICS CO., LTD

电话 Tel: +86 134 1300 5581 E-mail: 772051824@qq.com 地址: 广东省惠州市博罗县石湾镇鸾岗谢屋工业园
Add: Shiwantown Luan Gang Xie Wu Industrial Park, Boluo County, Huizhou City, Guangdong Province



WeChat

ENJOY THE AUDITORY FEAST IT BRINGS

尽情享受“它”带来的听觉盛宴



T12



T18



R7



T116



USB塑胶耳壳



3.5调音版



3.5调音版



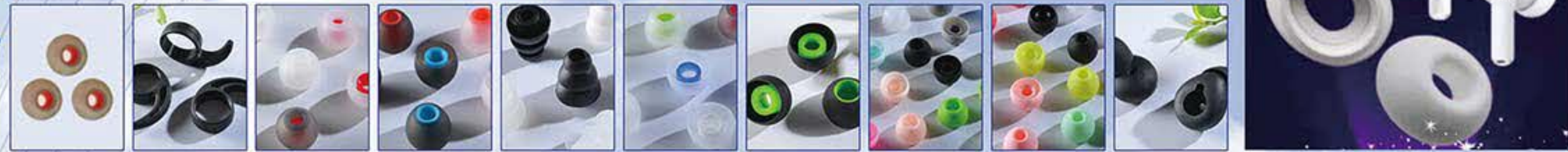
D700



TD-LY01半入耳



Enlink show shops app



欢迎咨询
Welcome to Inquire

Mob/手机: +86 134 1436 2511 / +86 134 3304 9471 (Mr. Yang/阳先生) QQ: 1224089491
 WeChat/微信: 13433049471 Tel/电话: +86 0769 89786970 地址: 东莞市虎门镇怀德远丰村八巷22号
 Add: No. 22, Alley 8, Yuanfeng Village, Huaide, Humen Town, Dongguan City

更多产品
More Products
www.ejrr.com 57



宝惠通

BAOHUITONG

融入你生活的声音

YOUR BEST CHOICE~
The voice that blends into your life



BHT-115



BHT-TT9



BHT-T3
MINI WAREHOUSE

JUST LIKE VISITING EVERY SCENE
THAT TOUCHES THE HEARTSTRINGS IN PERSON



BHT BT129



BHT BT128



BHT TT2



BHT TT5



BHT TT6

专利号: ZL 202030176050.1



BHT T2

A WIDE RANGE OF STYLES FOR YOU TO CHOOSE FROM



BHT-BT14
专利号: ZL 202130526329.2



BH7-300N



BH7-M001
with microphone



BH7-602
with microphone



BHT-JB182
with microphone



BHT-689
with microphone



BHT-2118
with microphone



BHT-820
with microphone



BHT-841
with microphone



BH7-816
with microphone



BHT-820
no microphone



BHT-689
no microphone



BHT-JB335



BH7-505X
headset



BH7-400A
headset



BH7-315
headset



BH7-819

HUIZHOU BAOHUITONG HARDWARE PLASTIC MOULD ELECTRONICS CO., LTD.

Mob: +86 133-5277-4568 (Mr.Lv) +86 139-2684-1172 (Miss.Xu)

Tel: +86 752 6618481 QQ: 915258381 E-mail: baohuitong@outlook.com

Add: 366 Jinxing Road, Liboshui, Shiwang Town, Boluo County, Huizhou City, Guangdong Province



WeChat



WeChat



Elink show shop app

杰之升

Huizhou Jiezhisheng Electronic Technology Co
电子科技有限公司(惠州市)

JZS-601

Color: ● ● ●

Bluetooth 5.4

Long standby life

ACC 360° AIR CONDUCTION STEREO



JZS-603

Color: ● ●



JZS-602

Color: ● ● ● ●



JZS-704

Color: ● ● ●



JZS-604

Color: ● ● ● ●



JZS-706

Color: ● ●



JZS-707

Color: ● ●



JZS-708

Color: ● ●



JZS-709

Color: ● ● ●



JZS-710

Color: ●



JZS-711

Color: ● ● ●



JZS-712

Color: ●



JZS-713

Color: ● ● ● ●



JZS-714

Color: ●



JZS-715

Color: ●



JZS-716

Color: ●

除了外观花纹差异, 功能完全一样



惠州杰之升电子科技有限公司

Huizhou Jiezhisheng Electronic Technology Co

TEL: +86 15360927978(MR.LONG) E-MAIL: 670382190@qq.com

ADD: No. 88, Zhonggang Yewu New Village, Boluo County, Huizhou City, Guangdong Province



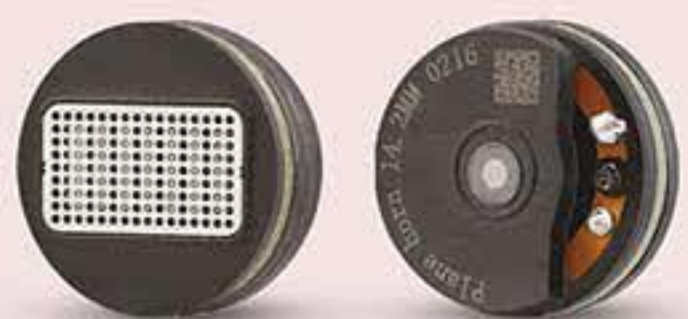
WECHAT



Whats APP

M206

With the new 14.2 flat panel speakers, you can feel the exaggerated resolution and balanced three-frequency performance, the natural and realistic sound, the quality of the cavity design, the M206 has certain requirements for the front end and requires some investment in the front end.



14.2 Flat diaphragm horn



M99

HIFI HEADPHONES



- Natural and authentic sound
- More cohesive sound
- Quality chamber design
- Cleaner bottom end

Sound density, sense of energy, sound field compared to other flat headphones is a leap forward, low and mid-range frequencies are the highlight, low frequency elasticity, sound cohesion is not diffuse, the collection is very clean, dive huge deep, you can smash to the chest position; excellent mid-range thickness, tooth and grain polished very smooth, no harsh feeling at all, rich in emotion; high frequency overall restraint, extension is moderate, belong to the delicate and soft towards, not deliberately pursue the sense of gloss.

M19

HIFI HEADPHONES

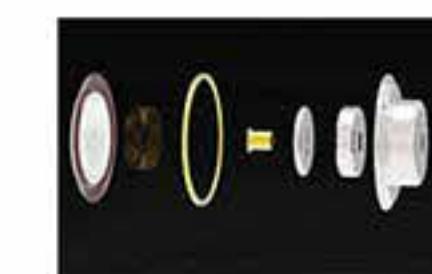


MZ01 HIFI HEADPHONES

- Product Name: moving coil HIFI ear cup
- How to wear: In-Ear
- Package type: Official Standard
- The horn unit: moving coil 14.2mm
- Sensitivity: 109dB/mW
- Frequency range: 10HZ-40000HZ
- wire stock: 078mm 2pin The wire can be replaced
- Impedance: 44Ω
- Place of origin: Made in China
- Brand maker: MIAOZE
- Earshell material: aluminium alloy
- Manufacturer: Dong guan MIAOZE Acoustics Technology Co.Ltd.
- Implementation standards: GB/T 14471-2013
- Recommended use: monitor philharmonic



14.2 Ceramic diaphragm horn



SILVER MOON MZ02

- Product Name: In-Ear Earphones
- How to wear: In-Ear
- Package type: Official Standard
- Sensitivity: 108dB/mw
- wire stock: 078mm 2pin The wire can be replaced
- Impedance: 32Ω
- Place of origin: Made in China
- Brand maker: Dongguan miaoze Electroacoustic Technology Co.Ltd.
- Manufacturer: Dongguan
- Implementation standards: GB/T 14471-2013



10mm graphene moving coil speaker



SELF-DEVELOPED HORN

Although it is a moving coil unit, but the taste of moving iron, in addition, especially valuable is to maintain the high quality of high-frequency resolution at the same time, the low-frequency aspects of no pressure at all, the sound is very full, listenable, the absolute flagship 12.5mm audiophile headphone unit! This unit is powerful and powerful low-frequency, sound clarity and soft and round, elasticity is strong and free, the sense of vibration is super HIFI sound, sound clarity, soft and round, strong and free.



12.5mm flat diaphragm horn unit

ACCORDING TO PERSONAL PREFERENCES CAN BE
CHANGED DIFFERENT CORE CONFIGURATIONS OF THE WIRE

DONGGUAN QIAOTOU XIANGZI FACTORY

Mob: +86 150 2400 7979 (Mr.Zuo) E-mail: zuohaibo1983@126.com
Web: <https://xiangzi168.1688.com/>
Add: Dazhou No.1 Industrial Zone, Qiaotou Town, Dongguan City Guangdong Province



DONGGUAN SWEET PIE ACOUSTIC TECHNOLOGY CO., LTD

东莞市悦耳派声学科技有限公司



COMPANY PROFILE

Engaged in the speaker industry for more than 30 years, senior industry experience, accurate for your headset products, EQ tuning! Physical tuning! Highly automated production! Cost reduction and efficiency! Create a win-win situation!

从事扬声器行业30多年，资深行业经验，精准为您耳机产品，EQ调音！物理调音！高度自动化生产！降本增效！共创双赢！

Sweet pie

头盔耳机专利喇叭



降噪喇叭



YEP50320066-02

YEP40320088-02



YEP40320086-02

YEP30320018-02



YEP50320186-02



PATENT CERTIFICATE



悦耳派声学让您永远放心 | ALWAYS HAVE PEACE OF MIND WITH SWEET PIE ACOUSTIC

FACTORY DISPLAY

CRAFTSMANSHIP TO CREATE PERFECTION



DONGGUAN SWEET PIE ACOUSTIC TECHNOLOGY CO., LTD

Contact: +86 1337796658 Mr.Liu / +86 15322418188 Mr.Liu E-mail: yep868@163.com

Add: No. 8, Industrial North Road, Chikan Village, Shipai Town, Dongguan City

地址: 广东省东莞市石排镇赤坎工业化北路二路8号





GB-05
Colour: ■ ■

GB-04
Colour: ■ ■



DB-03
Colour: ■ ■

GB-08
Colour: ■



DB-02



WX-08



DB-01



GB-10



GB-03



GB-09



GB-06



WX-Y



WX-X

DONGGUAN HIFIFREEMAX INTELLIGENT TECHNOLOGY CO., LTD.
东莞市海菲麦克斯智能科技有限公司

181 4878 0888 (赵先生)

ELEVATOR NO. 8, 2ND FLOOR, BUILDING B6, MEIHEXI SCIENCE AND TECHNOLOGY PARK,
MINGYUE 2ND ROAD, SHIWAN TOWN, BOLUO COUNTY, HUIZHOU CITY, GUANGDONG PROVINCE
广东省惠州市博罗县石湾镇明月二路美合科技园B6栋2层8号电梯





NIFENG ELECTRONICS

广州市逆风电子有限公司



3.5 Port



Type-c Port



Converte



GUANGZHOU NIFENG ELECTRONICS CO., LTD.
广州市逆风电子有限公司

Add: 2F, No.10, Eight Alleys, Chaonanfang, Caiyi Village, East Ring Street, Panyu District, Guangzhou City

地址: 广州市番禺区东环街蔡一村朝南坊八巷10号二楼

NINGYUAN NIFENG ELECTRONICS CO., LTD.
宁远逆风电子有限公司

Add: Lianhuatang Resettlement Site, Lianhua Road, Shunling Street, Ningyuan County, Yongzhou City, Hunan Province

地址: 湖南省永州市宁远县舜陵街道莲花路莲花塘安置地

+86 13751064447 Mr.Li (Domestic sales)
+86 13580304356 Miss Wang (Overseas sales)

E-mail: lifeng@gznfdz.cn



Mr.Li Miss.Wang



006 ● ●
 Open Wearable Stereo w. Touch Screen
 Built-in EQ Adjustment
 Multi-language User Interface
 Bluetooth Version: V5.4-V6.0
 Specially Tuned Higher Volume Level
 Gaming Mode Available
 Customizable Brand Lock Screen

W32
 TWS w. Touch Screen
 Smart Touch Screen Available
 Built-in EQ Adjustment
 Gaming Mode Available
 Bluetooth Version: V5.4-V6.0
 Customizable Brand Lock Screen



007
 Open Wearable Stereo
 Battery Display Available
 Specially Tuned Higher Volume Level
 Gaming Mode Available
 Bluetooth Version: V5.4-V6.0

PRODUCT

<p>W01</p> <p>Semi-in-ear TWS Earbuds Bluetooth Version: V5.4 Gaming Mode Applied</p>	<p>W02</p> <p>In-ear TWS Earbuds Bluetooth Version: V5.4 Gaming Mode Applied 8M+ Sales Volume Around the World</p>	<p>W02 Plus</p> <p>In-ear TWS Earbuds Bluetooth Version: V5.4-V6.0 Gaming Mode Applied Battery Display</p>	<p>W03</p> <p>Semi-in-ear TWS Earbuds Bluetooth Version: V5.4 Battery Display/Logo Lighting Display Gaming Mode Applied</p>
<p>W07</p> <p>Semi-in-ear TWS Earbuds Bluetooth Version: V5.4 Strap Hole Available Gaming Mode Applied</p>	<p>W18</p> <p>Semi-in-ear TWS Earbuds w. Hand Gripper Bluetooth Version: V5.4 Battery Display Hand Gripper Counter Function for Exercise Gaming Mode Applied</p>	<p>W25</p> <p>Semi-in-ear TWS Earbuds Bluetooth Version: V5.4 Gaming Mode Applied</p>	<p>O05</p> <p>Sporty In-ear TWS Earbuds w. Earhanger Bluetooth Version: V5.4-V6.0 Battery Display Deep Bass Tuned Available Gaming Mode Applied</p>



生之辉
 SANGFAI
 佛山市生之辉电子科技有限公司

4 In-House Factories
 1000+ Person-Level Production Capacity
 OEM & ODM Service (from designing)
 30+ Years of Experience in the Industry
 Just for You



008 ● ●
 Open Wearable Stereo
 Bluetooth Version: V5.4-6.0
 Gaming Mode Applied
 Specially Tuned Higher Volume Level
 Customized Brushed Metal Logo Banner
 AI Function Available

<p>Q6</p> <p>Neck Band w. Metal Earpiece Bluetooth Version: V5.2-V5.4 Gaming Mode Applied</p>	<p>Q7</p> <p>Neck Band w. Plastic Earpiece Bluetooth Version: V5.4 Gaming Mode Applied</p>	<p>H8</p> <p>Neck Band w. Metal Earpiece Bluetooth Version: V5.4 Gaming Mode Applied</p>	<p>Q5 Plus</p> <p>Neck Band w. Plastic Earpiece Bluetooth Version: V5.0-V5.4 Gaming Mode Applied</p>	<p>HE05X II</p> <p>Neck Band w. Metal Earpiece Bluetooth Version: V5.0-V5.4 Gaming Mode Applied</p>
--	---	---	---	--

Foshan Shengzhihui Electronic Technology Co., Ltd.
 HQ Address: No.5 Xinda Industrial Zone, Shunde District, Foshan City
 Branch Factory1: Jiangkou Factory, No. 60, Hejiang First Road, Jiangkou Town, Fengkai County, Zhaoqing City, Guangdong
 Branch Factory2: Nanfeng Factory, No. 18, Dayuan Road, Jiuxiang 14th Team, Nanfeng Town, Fengkai County, Zhaoqing City, Guangdong
 Branch Factory3: Cangwu Factory, No.E568, Jinlong Huating, Shiqiao Town, Cangwu County, Wuzhou City, Guangxi

Email: yang@sangfai.com
 TEL: 86-0757-27333777



English Service Leo Yang
 项目经理 刘先生
 项目经理 汪先生



酷影塑胶

- COOL SHADOW PLASTIC -

KUYING PLASTIC CO., LTD. 酷影塑胶有限公司

K007



K006



K001



K002



K003



K005



K008



T-180



T-230



T-240



T-260



T-270

KUYING PLASTIC CO., LTD.

酷影塑胶有限公司

E-mail: 121072284@qq.com

Add: Wujiao Village, Gurao Town, Chaoyang District, Shantou City, Guangdong Province
地址: 广东省汕头市潮阳区谷饶镇乌寮村

+86 134 1511 9911 Mr.Lu



Mr.Lu Wechat



GAME MODE ANC



- THE SOUND QUALITY IS FULL
- LIGHTWEIGHT AND COMFORTABLE
- POWERFUL NOISE CANCELLATION

X8

NC13

MORE HEADPHONE STYLES



SHANTOU CHAOYANG GURAO KINGHOT ELECTRONIC ,LTD

Contact number: Mr. Liu +86 15815125958 Email: 156615156@qq.com
Address: East Side of Xianpo Road, Raozhong Road, Gu Rao Town, Chaoyang District, Shantou City



MK 东莞市迈科磁业有限公司

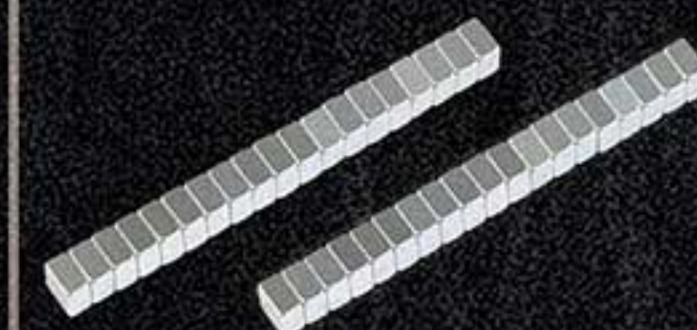
DONGGUAN MAIKE MAGNETIC INDUSTRY CO., LTD

迈科磁铁 迈向未来

Maiko magnet Step into the future



MK-04



MK-01



MK-02



MK-03



MK-05



MK-06



MK-07



MK-08



MK-09



MK-10



MK-11



MK-12



MK-13

东莞市迈科磁业有限公司 DONGGUAN MAIKE MAGNETIC INDUSTRY CO., LTD

TEL: MR.Lin +86 13537141840 +86 13924338298 E-MAIL: 640607150@qq.com
ADD: Building 3, No.8 Xintai Road, Shilong Town, Dongguan City, Guangdong Province



Professional

深圳市胜涛商贸
SHEN ZHEN SHI SHENG TAO SHANG MAO

ACQUISITION OF INVENTORY PRODUCTS

专业长期 库存产品积压收购

PURCHASE A VARIETY OF HEADSETS, CHARGING CABLES, CHARGERS, DATA CABLES AND A LARGE NUMBER OF INVENTORY PRODUCTS

长年收购各种耳机、充电线、充电器、数据线等大量库存产品



SHEN ZHEN SHI SHENG TAO SHANG MAO

TEL: Mr.Han (韩先生)+86 17322368871 / +86 13418218281
ADD: Shenzhen Shiyan Shuitian Road 18 billion Lai Industrial zone
地址: 深圳市石岩水田路18号亿莱工业区



WECHAT MOMENTS UPDATE DAILY
WELCOME TO FOLLOW
微信号: 17322368871, 13418218281

DONGGUAN HAOMING ELECTRONICS CO., LTD.

东莞市浩鸣电子有限公司



PROFESSIONAL BLUETOOTH HEADSET BLUETOOTH SPEAKER OEM, ODM

专业蓝牙耳机蓝牙音箱OEM, ODM



Dongguan Haoming Electronics Co., Ltd. was established in 2021. The factory is located in Chashan Town, Dongguan City. It is a professional Bluetooth headset, Bluetooth speaker and other electronic products production and processing factory. It has more than 60 employees and a plant area of more than 1,000 square meters. Welcome to the foreign trade companies, e-commerce companies and finished product manufacturers to consult and negotiate!

东莞市浩鸣电子有限公司成立于2021年, 工厂位于东莞市茶山镇, 是一家专业蓝牙耳机, 蓝牙音箱等电子产品生产加工厂家, 现有员工六十多人, 厂房面积一千多平米。欢迎各外贸公司, 电商公司和成品生产厂家咨询洽谈!

E-mail: sheepz@126.com +86 180 2915 3988 / Mr.Zeng 曾先生

Add: Building 3, No.60, Weijian Road, Chashan Industrial Park, Chashan Town, Dongguan City
地址: 东莞市茶山镇茶山工业园伟建路60号3号楼



Mr.Zeng

BLUETOOTH NOISE-CANCELLING HEADPHONES

Maiceles®

- WIRELESS BLUETOOTH
无线蓝牙
- ANC TAKES THE INITIATIVE TO REDUCE NOISE
ANC主动降噪
- LIGHT AND COMFORTABLE
轻便舒适

Q7



Q6 COLOUR:

Q2-有线耳机



Q6-有线耳机



ANC-211



TWS-01



音箱-001.BIP.437



惠州市迈塞尔电子科技有限公司

HUIZHOU MAICELES ELECTRONIC TECHNOLOGY CO., LTD

Mob: +86 150 1716 1362 (Mr. Yan 严先生) / +86 152 0796 6925 (Mr. Xiao 肖先生)

E-mail: shukuiaini@163.com

Add: 广东省惠州市博罗县石湾镇宏明东路52号4楼

4F, 52 Hongming East Road, Shivan Town, Boluo County, Huizhou City, Guangdong Province



WeChat (Mr. Xiao)



WeChat (Mr. Yan)

智创达®

SPECIALIZED PRODUCTION

Bluetooth headphones, mobile phone headphones, semi-finished headphone cables, audio adapters, data cables... Accepting OEM and ODM orders.

THE TWO-IN-ONE PLUG HAS APPLIED FOR A UTILITY MODEL PATENT.
Patent Number: ZL2023 2 2583638.X
二合一专利插头, 仿冒必究



ZHICHUANG DA ELECTRONICS FACTORY

+86 137 1736 7528 Mr. Qin (SALES)

+86 180 7641 6285 Miss Yang (MERCHANDISER)

Add:Guigang City, Guangxi Province, Pingshan Town, Pingnan County, Homecoming pioneer Park

Aliwangwang ID: eontar

Q Q: 340011011

E-mail: 340011011@qq.com

<https://eontar.1688.com>



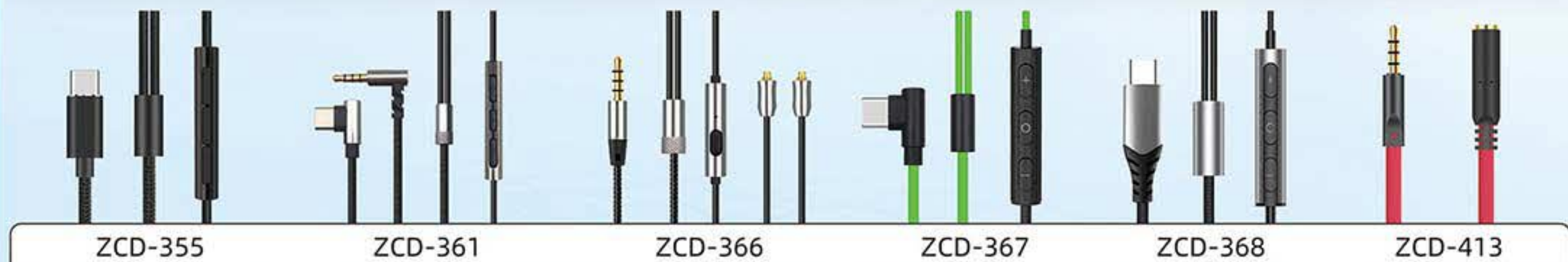
Mr. Qin



Miss Yang



Alibaba



WIRELESS & HI-FI

final ZE8000 MK2 Review

Today, James reviews the final ZE8000 MK2, which is a 2nd-generation True Wireless System (TWS) with improved ANC performance and a new “Shield Fin” design. It is priced at \$399.

Disclaimer: This was sent to us as a sample for our honest opinion. Headfonics is an independent website with no affiliate links or services. We thank the team at final and Jack Rabbit Media for giving us this opportunity.

Listed in 2024
Price: \$399



FINAL ZE8000 MK2 REVIEW

The final ZE8000 MK2 True Wireless System delivers an excellent wireless and sonic performance across a wide range of genres with improved practical noise reduction and DSP features over the original version from last year.

Despite having the same housing shape, final has made several improvements including changing the internal designs, as well as upgrading its Active Noise Cancellation algorithms.

Additionally, they have elevated their 8K Sound+ technology, further pushing the output quality and S/N ratio performance by DSP.

While the original ZE8000 was already a reliable performer, I feel the ZE8000 MK2 has pushed the performance up a notch with stronger performance dynamics, a darker background, and improved ANC.

Read on to find out how I came to those conclusions in more detail in my full review below.

Pros
Flexible ANC modes
Exceptional fit
Functional DSP implementation

Cons
Big cradle to carry
Limited battery time

● The final ZE8000 MK2 True Wireless System is the successor to the ZE8000 first-generation TWS we reviewed just over a year ago.

Tech Highlights

The final ZE8000 MK2 is a universal IPX4-rated True Wireless System using a single 13mm dynamic driver in each earbud. It is equipped with Bluetooth 5.2 technology powered by a Qualcomm chipset with a codec decoding capability ranging from AAC and SBC, up to the latest aptX Adaptive but has no LDAC option.

The driver design of the ZE8000 MK2 is once again based on the f-CORE driver that adopts an adhesive-less structure.

While most TWS earphones use a Class D circuit, the ZE8000 MK2 stands out with its Class-AB amplifier, which we found to offer a more competitive sound quality than many competitors in the original MK1 review last year.

The ZE8000 MK2 can play music for up to 5 hours on its own, and an additional 15 hours with the charging cradle. Considering its performance, this battery life is adequate.

Even with the ANC functionality and 8K SOUND+ function enabled, it still lasts for more than 3.5 hours in practice, which is quite decent for its high performance.



DSP

Similar to the ZE8000 MK1, you can access the final Connect App to activate the proprietary 8K SOUND+ digital enhancer. This feature reprocesses the audio output, further enhancing the definition and tonality.

The DSP implementation by final is benchmarked on S/N (Signal-to-Noise) measurements, possibly an impulse response corrector that can effectively alter the output. When enabled and in a quiet room, you can experience a noticeable boost in micro details and musicality.

It's worth noting that depending on your audio source, you may experience faster battery drainage.

However, the improvement in sound quality is quite discernible, particularly with a darker, cleaner background, and a more balanced, rounded output, with a heightened sense of control and precision.

Design

I have been using the original ZE8000 for almost a year and it remains one of the most unique yet adorable earbud form factors. The key reason is its tip design which embodies the whole area that touches your outer ear.

Final has enhanced this design even further with a new “Shield Fin” mechanism. This boosts noise isolation and allows the ZE8000 MK2 to stay even more securely in the ears. The shape also reduces the mass of the front chamber by shifting it to the protruding parts, resulting in improved wearability.

The remaining design closely resembles the ZE8000, featuring a textured finish that provides a tactile grip and is as rugged as heavy-duty gears or camera paint jobs. This finish ensures that scratches are not easily noticeable.

Once again, the design is exceptionally lightweight yet remarkably solid. In windy areas, the slightly protruding design may cause some wind noise to be captured. However, switching to the wind noise-cancelling mode can effectively eliminate it.

Mic System

The ZE8000 MK2 earphones incorporate Final's exclusive beamforming algorithm to improve phone call quality.

With strategically placed dual high-performance microphones, they capture the user's voice and ambient sound simultaneously. The algorithm then calculates the time difference between the microphone signals and cancels out the user's voice during phone calls, resulting in clearer communication.

In practice voices are picked up clearly when I answer a call on the train and the experience is satisfactory, picking up nicely my voice and isolating it from other people's voices and the ambient.

Note: The above pictures and texts are transferred from digitaltrends.com. If there is any infringement, please contact InRaiser.

3C DIGITAL INDUSTRY PLATFORM

Branding For You

- HIFI Speakers
- Bluetooth Speakers
- Outdoor Speakers

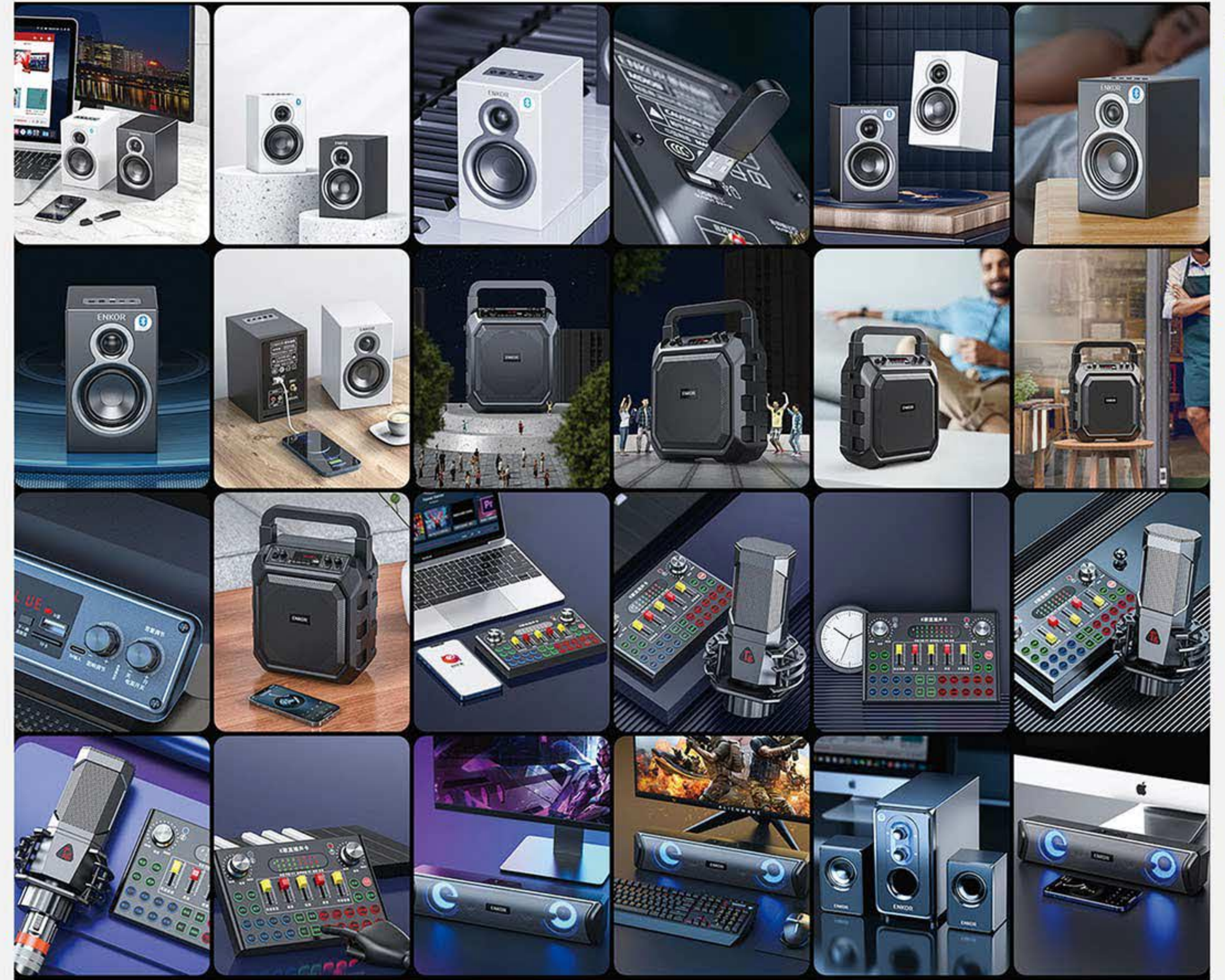
ENKOR

E10S

**GOOD SOUND QUALITY
HIGH PERFORMANCE SPEAKERS**

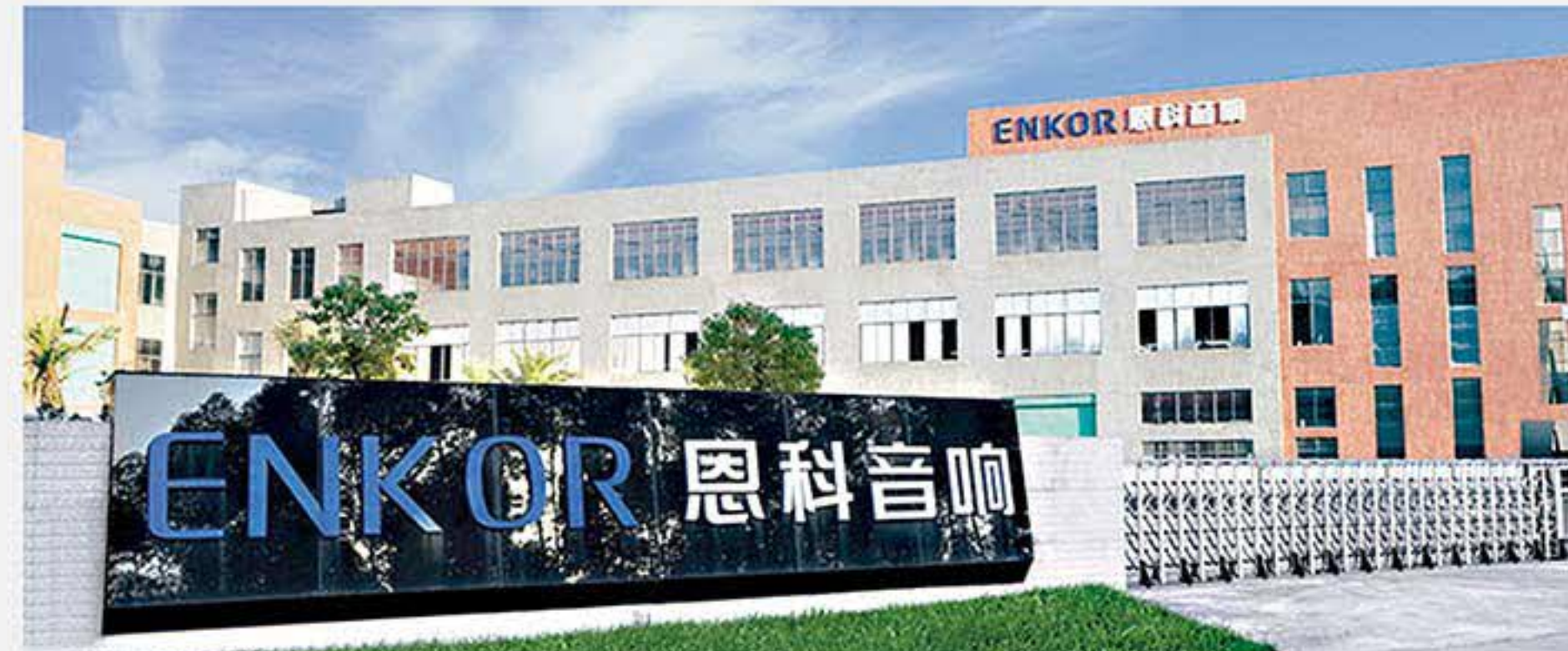
EXTRAORDINARY EXPERIENCE

- 4 INCH HIGH PERFORMANCE SPEAKER
- SIMPLE AND COMPACT CABINET
- MASTER VOLUME LED BLUE LIGHT EFFECT
- CAN READ USB/SD CARD



Founded in 2003 in Shenzhen, China. Shenzhen high-tech enterprise, well-known audio brand and audio product solution provider in the fields of multimedia speakers, home video and smart home. At present, Enke is mainly engaged in innovative R&D, design, production and sales of multimedia speakers, HIFI speakers, Bluetooth speakers, professional audio, home speakers and smart speakers. Its existing Shenzhen Enke Electronics Co., Ltd., Jiangxi Enke Technology Co., Ltd., Jiangxi Ganzhou Mushi Electronics Co., Ltd.

Fifteen years of intensive cultivation in the international and domestic markets have accumulated strong R&D and manufacturing strength, perfect quality management system and market supply capacity. For a long time, it has successfully cooperated with the world's top 500 companies, and its products are sold well in more than 80 countries and regions in the world. Among them, the export of 5.1 series multimedia speakers is firmly in the forefront of the national counterparts.



ENKOR

Address: Building P, Building 0, Shengguang Industrial Park, Zhenzhou Road, Huangpu, Baoan District, Shenzhen City, Guangdong Province

Tel: 075527337168
4001-138-168
Fax: 075581461101 Email: Sales@enkor.net

Welcome to buy, there is always a product you like

NEW TREND TWO IN ONE BOTH BLUETOOTH EARPHONES

IT'S BLUETOOTH AUDIO AGAIN

FREE SWITCHING



Ultra thin and lightweight
Fashion fabric mesh
HD Voice

HFO1
Bluetooth

DONGGUAN SHISHISHUN TECHNOLOGY CO., LTD

+86 136 8686 7718 +86 136 8955 7200 jabcam@foxmail.com
2nd Floor, Building 2, No. 274 Guanlong Road, Xiaqiao, Dongcheng Street, Dongguan City, Guangdong Province, China

INTEGRATED SPEAKER
MICROPHONE
PALMTOP MICROPHONE



- ONE CLICK SOUND CANCELLATION
- REVERBERATION SOUND EFFECT ADJUSTMENT
- HIFI SOUND QUALITY

HFO9

MORE EXCITING SHINING HELLO LOOK

IHARFU: HELLO, HAPPINESS!
o o o



HF18W Bluetooth



HF10 Bluetooth



HF16 Bluetooth

ONE PRODUCT WITH MULTIPLE USES LIFE EDITED
5D SURROUND SOUND EFFECT
AI INTELLIGENT LITTLE PRINCESS

Multimedia Bluetooth speaker J007

Touchable Dynamic Music
Easy to navigate multiple scenarios
Hifi original sound is pure and transparent



Hifi sound effect



Double horn structure



voice call

COLORS



BLUETOOTH CONNECTION CONNECTION TO MOBILE PHONES



BLUETOOTH CONNECTION TO COMPUTER



OUTDOOR SCENES



SPEAKER BROADCASTING

Small and portable, practical bluetooth speaker

Bluetooth audio style

Provide you with more choices of Bluetooth audio styles ...



ET211



P109



LP-V51



LP-V58



LP-V39



LM884



M-02



L56



NB-502

FOSHAN NANHAI DISTRICT YINBEIER ELECTRONICS FACTORY

Tel: +86 182 0207 9459

Add: 408, 4th Floor, Elevator 1, West Zone, Building A, No. 116 North Lishui Avenue, Lishui Town, Nanhai District Foshan City, Guangdong Province

Wireless charging

BLUETOOTH CLOCK SPEAKER

Wireless charging is suitable for various mobile phones that support wireless charging

WD-301

YOUR BEDSIDE SPEAKER

Wireless Bluetooth connection × Enjoy music while charging



MULTIPLE FUNCTIONS AND IMPRESSIVE APPEARANCE

Spend a pleasant day with you



Wireless Charger

Put your charging cables away and wireless charge your smartphone!



FM Radio
Listen to your favourite FM radios anytime



Charge 2 Phones simultaneously
With USB charge out port for cable charging or use both wireless and cable charging at the same time



Bluetooth

Bass Enhance Button

SOME OF THE BLUETOOTH SPEAKERS ON DISPLAY



WIRELESS CHARGING BLUETOOTH STEREO

Wireless charging Bluetooth music clock alarm clock 5-in-1 dual coil wireless charging audio

WD-200



SHENZHEN LANLIAN DIGITAL TECHNOLOGY CO., LTD

Tel: +860769 89608802 / +86 13 7151 79844

Add: 424 Qingfeng Building, No. 11 Longgang Road, Pingnan Community, Longgang Street, Longgang District, Shenzhen City, Guangdong Province

ABOUT US

Shenzhen Chaojin Electronics Co., Ltd., founded in 2007, is a manufacturing enterprise engaged in the production and sales of middle and high-end health consumer electronics, and is committed to the research and development of electronic products for aromatherapy humidifiers.

4500m²
cover an area

10articles
line

230+people
Number of employees



THIS IS A SPEAKER THAT CAN BE HUMIDIFIED

MULTIFUNCTIONAL BLUETOOTH SPEAKER

HE'S DIFFERENT FROM OTHER BLUETOOTH SPEAKERS

M-01



BLUETOOTH MUSIC
AROMATHERAPY MACHINE

CJ-501



M-02C



Mobile Bluetooth
connection

WE DON'T JUST PRODUCE SPEAKERS

PROFESSIONAL RESEARCH AND
DEVELOPMENT AND PRODUCTION
OF HOUSEHOLD APPLIANCES



CJ-736

Clock
aromatherapy humidifier



CJ-501L

Clock+alarm clock
aromatherapy humidifier



JX-505

Music Clock
Aromatherapy humidifier



H8-1

Aromatherapy humidifier



H9

Bonfire aromatherapy machine



U-20

Flame lamp
aromatherapy humidifier



X-01

Aromatherapy humidifier



CJ-733

Intelligent aromatherapy machine



CJ-734

Himalayan Salt Lamp Diffuser

SHENZHEN CHAOJIN ELECTRONICS CO., LTD

Tel: +86 180 0258 3768

Add: 201, 301, 401, Building A5, Datianyang Industrial Zone (Huamei Road Section), Dongfang Community
Songgang Street, Bao'an District, Shenzhen City, Guangdong Province

BLUETOOTH SPEAKER

MULTIFUNCTIONAL BLUETOOTH SPEAKER

SALUTE TO CLASSIC MEMORIES RETRO

NEW COLORS BRING CHARM NEVER LET GO OF GOOD TIMES



OUTSTANDING APPEARANCE AND FUNCTIONALITY



Wood grain
Solid wood



Lightweight and convenient
Comes with its own lanyard



Bluetooth 5.0
Technology upgrade



HD sound quality
Realistic and natural sound quality

WOODEN BLUETOOTH SPEAKER

Mini stereo, small body, big capacity, handy, compact and convenient, full-range speaker, sharp sound levels, full of details, bass, so that the heavenly music into every occasion of your life, Bluetooth connection, fast and stable connection Easy to enjoy wireless music.



BLUETOOTH LINK



WOODEN BOX



STRONG BASS



MINI PORTABLE



10 METER CONNECTION



LONG RANGE



M7



D30



M8



K5



K5A



N10



SHENZHEN KAIJASON ELECTRONICS CO., LTD

Tel: +86 18806661500 (Mr Ran)

Add: 5th Floor, Building 9, Huixin Industrial Park, No. 88 Daxing Road, Yangwu Village
Dalingshan Town, Dongguan City, Guangdong Province



PORTABLE SMALL OUTDOOR HOME STEREO


MOBILE WIRELESS SOUND BOX

LARGE BATTERY LONG BATTERY LIFE

ONE MONTH STANDBY WITHOUT POWER 10 HOURS OF CONTINUOUS LISTENING



60W HIGH POWER
Surge in bass shock in treble meet the needs of various scenes



RGB DAZZLING LIGHT EFFECT
Fine and smooth light colours Brilliantly bright and atmospheric



3600MAH BATTERY CAPACITY
Large battery long battery life for outdoor fun



BLUETOOTH 5.2
High-speed and stable connection Extensive compatibility

WIRELESS BLUETOOTH SPEAKER OUTDOOR SMALL PORTABLE



S39

THE SOUND QUALITY IS BEYOND IMAGINATION



S61

JOY IS NOT JUST ONE WAY



S62

PORTABLE HOME CINEMA MOBILE SUBWOOFER



S32

HIGH VOLUME AND STRONG ENDURANCE



S53

57MM LARGE HORN



S51

PORTABLE HOME CINEMA MOBILE SUBWOOFER



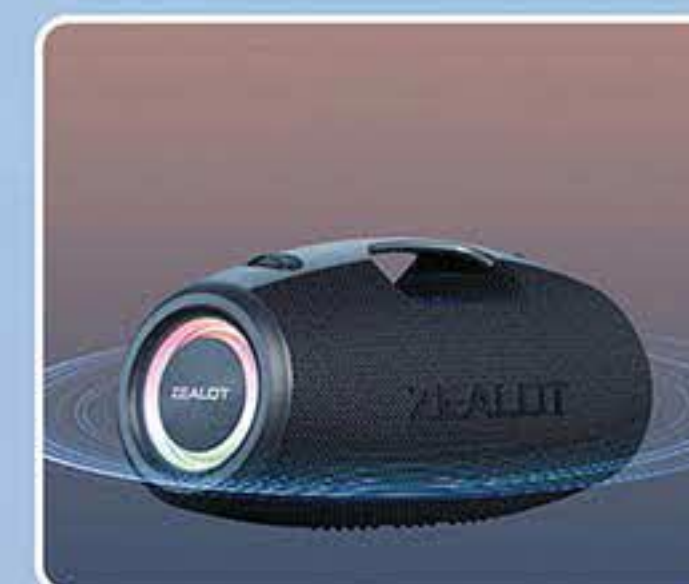
HIFI sound quality



Large 24000maAH battery



Four large speakers



100W large probability



SHENZHEN FANATICS DIGITAL TECHNOLOGY CO., LTD

Tel: +86 0755 29631825 Mob: +86 137 5109 0122 (Mr Chen)
Web: <https://shop1350579441570.1688.com>
Add: 401 and 501, Building 3, No. 8 Yongtai East Road, Baishixia Community, Fuyong Street, Bao'an District, Shenzhen, Guangdong



Bluetooth connectivity
Speaker

WATERPROOF

MULTIFUNCTION WIRELESS SPEAKER

F11

PORTABLE
MULTIFUNCTIONAL
BLUETOOTH AUDIO



SHENZHEN LESHANG CREATIVE TECHNOLOGY CO., LTD

Tel: +86 755 21638400 +86 13824346343 (Mr li)

Add: 2nd Floor, No. 12 Hengnan Road, Guxing Community, Xixiang Street, Bao'an District, Shenzhen City, Guangdong Province

MULTIPLE STYLES TO CHOOSE FROM

MINI MUSIC BOX

F0



MULTIFUNCTION WIRELESS SPEAKER

F3



PORTABLE DESKTOP SPEAKER

XS MAX



BLUETOOTH
HANDSFREE
TF CARD
DISK
AUX
FM RADIO
...



DRM-W03

BLUETOOTH 5.0 STABLE CONNECTION

ONE IS GOOD BUT TWO IS EVEN BETTER

PAIR 2 SPEAKERS TOGETHER FOR A COMBINATION OF TOTAL 100W POWERFUL STEREO SOUND

KEEP MORE ENERGY ENJOY LONGER PLAY-TIME



DOME DIAPHRAGM PORTABLE SUBWOOFER

PROFESSIONAL SPEAKER
STARTING FROM APPEARANCE AND LOYAL
TO SOUND QUALITY

BK-201

ENJOY TIME WITH THE SOUND AND MOVEMENT



COLORFUL LIGHTS MOVE WITH MUSIC



LOUDSPEAKER

The lights move with the music showing great sound and color



High fidelity audio quality



Large battery capacity



Dazzling light effect



S16



BK202



BS-39D



SHENZHEN SHANGYITU TECHNOLOGY CO., LTD

Tel: +86-755 23777969 / +86 159 8958 8699 (Mr.sun)

Add: Ying'an Building, Industrial Road Tang Community, Longhua Minzhi Street Bao'an District
Shenzhen City, Guangdong Province

VITE30 威特宝

PORTABLE BLUETOOTH SPEAKER

THIS
SUMMER / MAKE A
DIFFERENT SOUND



COMPACT
KEEP IT IN CONTROL

SIMPLICITY
DERIVED FROM LIFE



A speaker that can speak
and sing, captures your
inner voice~

SHENZHEN WEITEBAO TECHNOLOGY DEVELOPMENT CO., LTD

Tel: +86 186 8481 9199 +86 183 2098 4982 (Mr Zhang)

Add: Building 6, Science Park, No. 10 Xianxiang Road, Xinsheng Village, Longgang District,
Shenzhen City, Guangdong Province

OUTDOOR PORTABLE BLUETOOTH SPEAKER



HIGH AND LOW FREQUENCY DIAPHRAGM
SURROUND SOUND GENERATION



APPROXIMATELY 6 HOURS OF UNLIMITED
BATTERY LIFE



IPX6 WATERPROOF WEATHER PROOF



6-COLOR RGB STUNNING LIGHT EFFECT

COLOURS



CARTOON BLUETOOTH SMALL SPEAKER

CUTE STYLING
SMALL STATURE, HIGH ENERGY



PORTABLE BLUETOOTH SPEAKER

SMALL AND EXQUISITE WITH AN EXTRAORDINARY VOICE

TAKE IT WITH YOU FOR OUTINGS, WITHOUT THE NEED FOR BATTERY ANXIETY. MUSIC ACCOMPANIES YOU FROM DUSK TO NIGHT, AND A SINGLE CHARGE CAN BRING ABOUT 8 HOURS OF MUSIC PLAYBACK.



EXCELLENT SOUND QUALITY



TWS INTERCONNECTION



BLUETOOTH CONNECTIVITY



LONG RANGE



Sanag X6Plus

360 °SURROUND SOUND

TWS WIRELESS SERIES CONNECTION OPENS IMMERSIVE SOUND FIELD

M30S PRO

9D AUDIO SPATIAL SOUND A SOUNDSTAGE THAT'S AS REAL AS IT GETS



BORN FOR MUSIC LISTENING WITHOUT RESTRAINT

M25S PRO

ENHANCED UNIT DIAPHRAGM SUPER LOW BASS IS AWE INSPIRING



EVERYWHERE AT THE CENTER OF MUSIC

SHENZHEN SIYI MEDIA CO., LTD

Tel: +86 180 2536 2118 (Mr.Zhou)

Add: Yuehu Building, Minzhi Avenue, Longhua District, Baoan District, Shenzhen



Portable Bluetooth speaker

BLG SOUND YOUR STYL

- 360° panoramic sound effect
- Small and portable
- The sound quality has never compromised
- Waterproof and anti drop



COMPANY PROFILE

Audience was born in Shenzhen, China. It is a brand under Shenzhen Ziyun Technology Co., Ltd. Its main business is digital products, engaged in the design and research and development of audiovisual products. Its production base is located in Shenzhen, China, and it adheres to the "localization" brand operation.



NEW Y1

CINEMA LEVEL STUNNING SOUND EFFECTS
SOUND WAVE BEAST
SUBWOOFER · BLUETOOTH SPEAKER



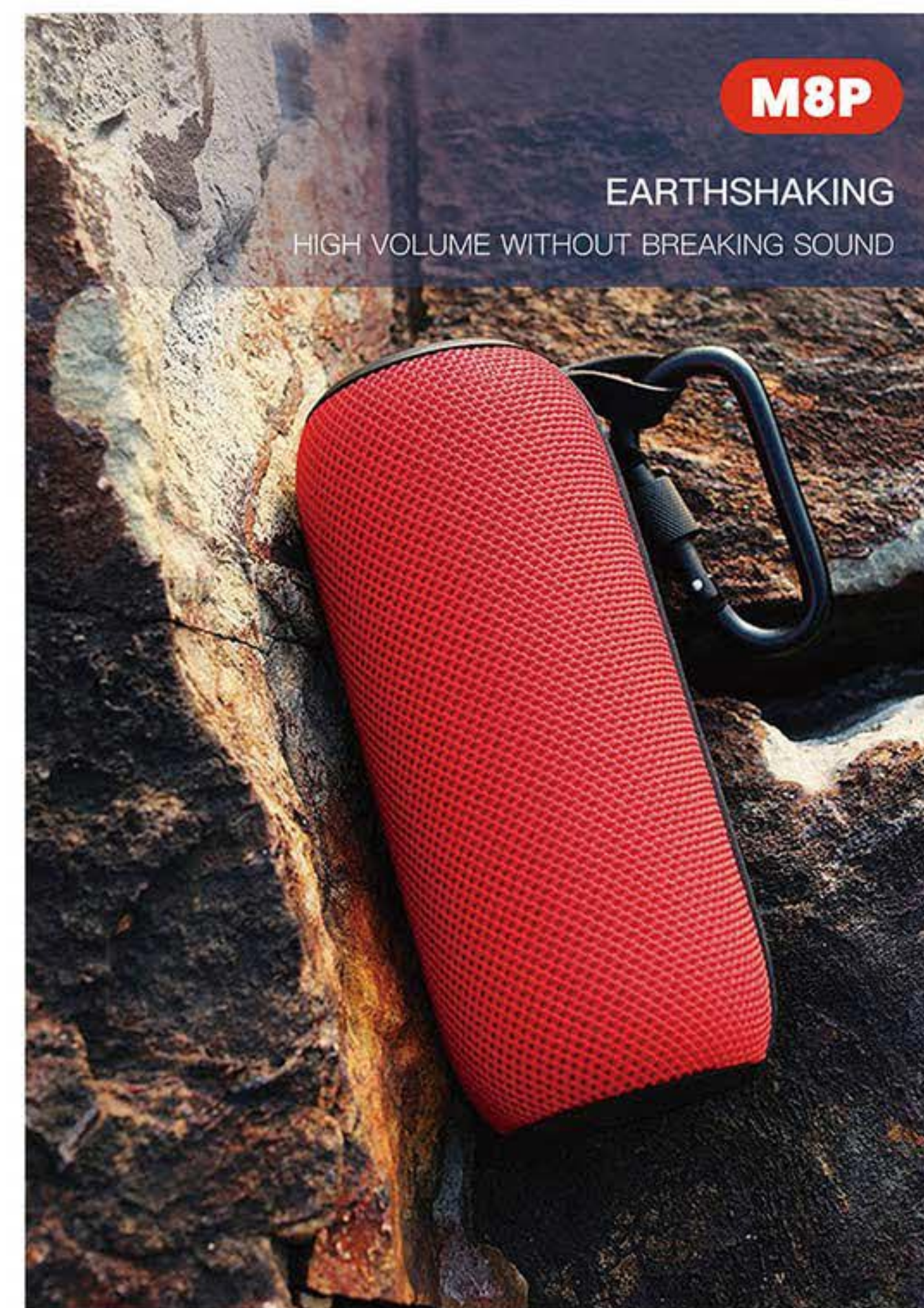
M15

PORTABLE BLUETOOTH SPEAKER
BORN FOR EXPLORATION



M8P

EARTHSHAKING
HIGH VOLUME WITHOUT BREAKING SOUND



SHENZHEN ZIYUN TECHNOLOGY CO., LTD

AUDIENCE

+86 15815547939 (Mr Yang) +86 0755-84821725 (Mr Zhu)

C315, Shangdinghao Creative Park, No. 7 Xiangye Road, Nanwan Street, Longgang District, Shenzhen City, Guangdong Province



FRUIT SPEAKER



THE SOUND IS COMING FROM YOU
A WONDERFUL TIME
IN LEISURE

SMALL AND EXQUISITE
SOUND YET EXTRAORDINARY

The music world should also be colorful

KOALA BLUETOOTH SPEAKER

HIFI

EXCEPTIONAL
SOUND QUALITY



ASTRONAUT
BLUETOOTH SPEAKER

ULTRA LOW DISTORTION HORN

IT'S BOTH A DECORATION
AND A SPEAKER

Music is pleasant, warm and transparent
An immersive experience that restores the essence of music



SHENZHEN ZHONGSHILAN INDUSTRIAL CO., LTD

Mob: +86-0755 81470894 / +86 185 7554 9786(Mr Xiong)
Add: 5th Floor, Meijiamei Industrial Park, Guiyue Road, Daping Community, Guanlan Street,
Longhua New Area, Bao'an District, Shenzhen City, Guangdong Province



WATERPROOF BLUETOOTH SUBWOOFER

BRAIDED LOOK
OUTDOOR PORTABLE



ADVANTAGE

THE HEART BEATS IN AN INSTANT



TWS interconnect technology



Heavy bass Dual speakers



Bluetooth 5.0 connectivity



Double bass cone



HiFi lossless sound



Chat and talk



Portable



Large capacity Long battery life



IPX7 rated waterproof



Outdoor wireless speaker

DYNAMIC ACCOMPANYING
PLAYING WITH JOY



Bluetooth 5.0 plan



360° Surround sound



Long battery life



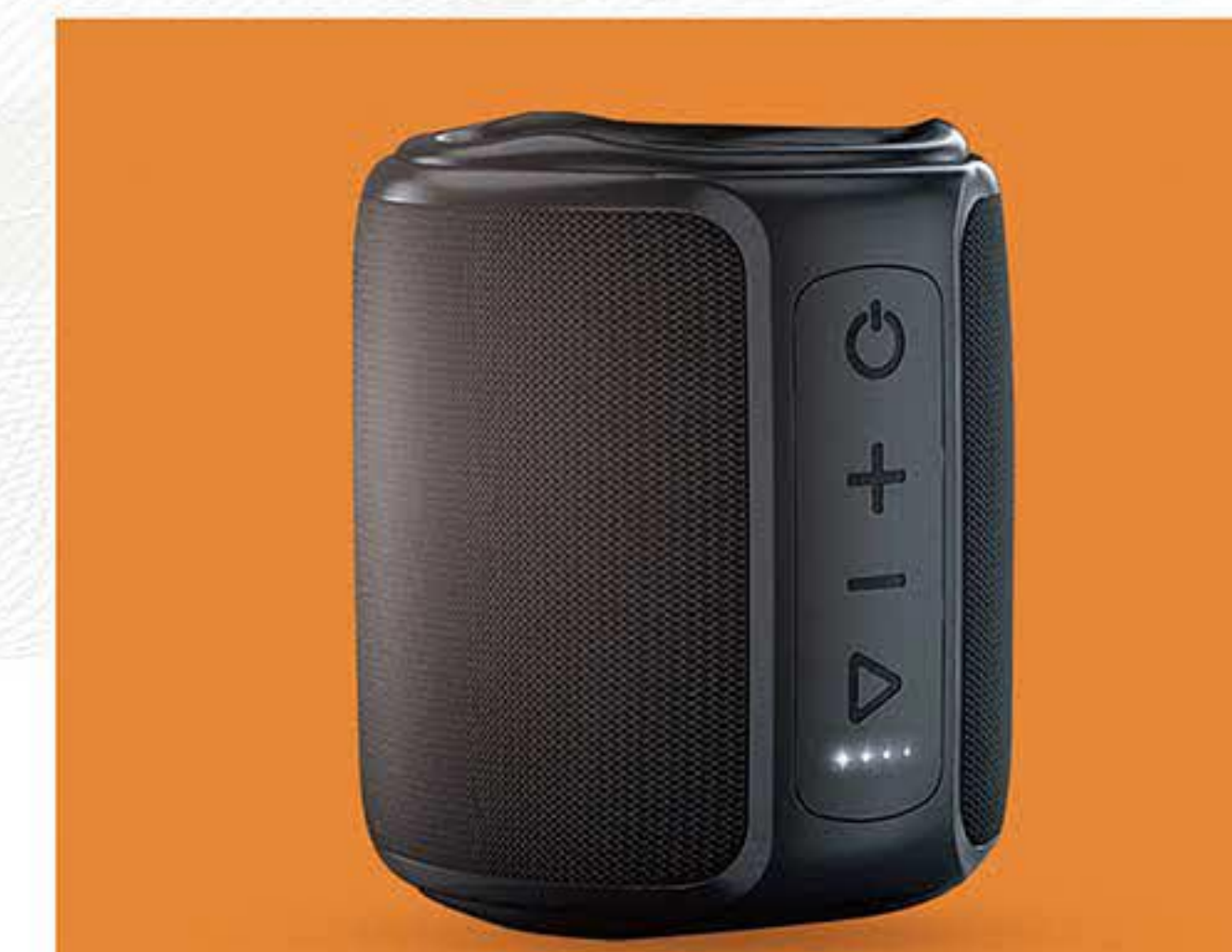
TWS Interconnection



Handsfree



Small and portable



SHENZHEN YALE ELECTROACOUSTIC CO., LTD

TEL: +86 0755 83739998 +86 13530779998 (Mr Lu)

ADD: Yujingtai Industrial Park, No. 35 Huaxing Road, Longhua Dalang, Bao'an District, Shenzhen, Guangdong Province



MINI HOME KARAOKE SPEAKER

PROFESSIONAL KARAOKE SPEAKER MICROPHONE SET

THE SOUND OF HEAVEN... AND YOU DESERVE IT TOO



IMMERSE YOURSELF IN A WORLD OF MUSIC

BONE CONDUCTION SLEEP AID AUDIO



COMFORTABLE COLOR SCHEME × BONE CONDUCTION SENSING × NEWLY UPGRADED BLUETOOTH 5.2



SHENZHEN LEYINHENG TECHNOLOGY CO.LTD.

Mob: +86 138 2331 0970 (Mr.chen)

Add: China Guangdong Shenzhen Bao'an District Longhua Dalang Chajiaokan 2nd District Building 29 103

HIGH QUALITY CRYSTAL CLEAR SOUND & RICH BASS

MUSIC

IPX6 WATER RESISTANCE

ENJOY MUSIC FREELY



MODEL F28

KEY ATTRIBUTES:

- CONNECTION MODE: BLUETOOTH CONNECTION
- FREQUENCY RESPONSE RANGE: 100HZ-20KHZ
- SIGNAL TO NOISE RATIO: ≥70DB
- EFFECTIVE DISTANCE: 10M
- CASE MATERIAL: ABS
- COLOUR: DARK BLACK, LIGHT GREY BLUE, LIGHT GREY
- WATERPROOF RATING: IPX 5
- BLUETOOTH VERSION: 5.0
- WHETHER BUILT-IN BATTERY: BUILT-IN BATTERY



MODEL F21

KEY ATTRIBUTES:

- APPLICATION SCENARIO: FITNESS,OUTDOOR,MOBILE PORTABLE
- CONNECTION: CARD READER
- FREQUENCY RESPONSE RANGE: 60HZ-15KHZ
- SIGNAL TO NOISE RATIO: ≥75DB
- NUMBER OF SPEAKERS: 2
- EFFECTIVE DISTANCE: 10M
- CABINET MATERIAL: ABS
- EXTERNAL DIMENSIONS: Φ75MM*180MM
- WATERPROOF RATING: IPX 6
- BLUETOOTH VERSION: 5.1
- WHETHER BUILT-IN BATTERY: BUILT-IN BATTERY



DONGGUAN LEFANG INDUSTRIAL CO.LTD

MOB: +86 137 1320 4780 (MR.YUAN)

ADD: NO.1 XIKENG ROAD, PUXIN VILLAGE, SHIPAI TOWN, DONGGUAN CITY, GUANGDONG, CHINA

LENRUE

LENRUE

LENRUE

• New Launched
• Ingenious Creation



- LED
- IPX6
- Bluetooth
- Card
- FM
- Type-C
- 24H



- IPX6 Weather Proof for Outdoors
- Super Portable Size to Carry at Ease
- TWS Connection for Loud Stereo Sound
- 24H Playing Time at 50% Volume and No Light

LOUDSPEAKER BOX

TIME MUSIC LAMP

BLUETOOTH TIME LIGHT SPEAKER

NEW VINTAGE TIME LIGHT SOUND SYSTEM



It's a wonderful music time as warm as candlelight.

DONGGUAN LE'ANG ELECTRONIC TECHNOLOGY CO., LTD

☎ 0769-8600 3887 +86 188 0260 7420

📍 BUILDING A, JIANLI INDUSTRIAL ZONE, NO.1 QINGTANG ROAD, QINGXI TOWN, DONGGUAN CITY, GUANGDONG PROVINCE



Alibaba

LIGHT UP YOUR LIFE

INDUCTIVE LIGHTING

INTERESTING BLACK TECHNOLOGY



Warm light & Ambient light mode



Six functions



Inductive lighting

SHENZHEN KAIWU LIFE CO., LTD

☎ Tel: +86 0755 987654321 (Mr Zhang)

📍 Add: 3F-A, 3rd Floor, Building 2, Shangweiyuan Xinyuan Industrial Zone, Gushu Community, Bao'an District, Shenzhen City, Guangdong Province



WIRELESS & HIFI

Sennheiser MOMENTUM True Wireless 4 Review

Today, Louis reviews the Sennheiser MOMENTUM True Wireless 4, which is a new Bluetooth 5.4-equipped dynamic driver TWS with ANC and aptX Lossless decoding. It is priced at \$299.95 SRP.

Disclaimer: This unit was sent to me as a sample in exchange for our honest opinion. Headfonics is an independent website with no affiliate links or services. We thank Sennheiser and Sonova for this opportunity.

Click here to learn more about the Sennheiser products we have previously featured on Headfonics.

Listed in 2024
Price: \$299.95



● SENNHEISER MOMENTUM TRUE WIRELESS 4 REVIEW

Sennheiser has an almost perfect ANC-equipped dynamic driver TWS model designed for both discerning audiophiles and casual enthusiasts. They ticked all the boxes here except for the lack of LDAC.

PROS

- Equipped with BT5.4
- Solid full-featured app integration
- Great connection stability over distance

CONS

- No LDAC

When Sennheiser changed hands over to Sonova, I wondered if the company would stay the same, improve, or go another route.

Well, it seems they're doing just fine. Anyone who has read Marcus' s take on the HD 660S2 full-sized headphones knows they seem to have embraced the improvement route.

A more recent example is the new Sennheiser MOMENTUM True Wireless 4 which retails for \$299.95. A few reviews have hit the web at a very fast pace and they're all saying good things.

We're going to raise the scrutiny level here, as always, and talk about all our observations of this new and feature-rich fourth-generation TWS model.

● Tech Highlights Bluetooth 5.4

The Sennheiser MOMENTUM True Wireless 4 TWS has gone through some time to evolve and the new version kicks into the modern age by employing the latest Bluetooth 5.4 radio that is capable of producing music from an aptX Lossless transmission.



● Driver

Inside each MOMENTUM True Wireless 4 TWS earbud lies a custom single dynamic 7mm driver with TrueResponse technology. This driver seems to be a similar driver to the one used inside the IE 200 and IE 300 which borrowed this same tech from the IE 900 and seems identical in specs to one used in the previous MOMENTUM model.

This TrueResponse exclusive technology according to Sennheiser promises a balanced sound signature and improves SPL, lowers distortion, and produces what Sennheiser calls true phase coherency.

Sennheiser lists the basic specifications of this driver. The frequency response is listed as 5Hz to 21kHz, with a sensitivity of 107 dB, and a speaker distortion level of 0.08% at 94 dB. These specifications sound like they belong to a decent wired IEM.

● Cradle

The MOMENTUM True Wireless 4 TWS cradle seems to have the same weight as the previous model. The cradle weighs 66g and is made mostly from polymer materials with a cloth wrap on the top and bottom portion of the cradle.

The cradle has the charging port upfront whereas I would have preferred a rear-mounted one. The port is a USB-C type and a power LED sits left alongside the charging port.

I do have one issue with this design overall. The position of the status LED on the MOMENTUM True Wireless 4 TWS earbuds lies underneath the body and is hidden when inserted into the cradle cavity, and there's no visual cue if each earbud is charging itself or not.

You can, however, check levels via the Smart Control App which will show which earbud is charging with a little lightning symbol.

That's just nitpicking I guess because the MOMENTUM True Wireless 4 TWS earbuds do sit within the cradle comfortably unlike some models in that you have to fiddle with their positioning to get the charging cycle going.

It is a sturdy case and it uses magnets to keep the lid closed and the earbuds in place as well.

● Sennheiser Smart Control APP

This app is full-featured and includes an equalizer, an earbud ear seal and fit test, and touch control customization. But some of the best features are locked up until you do a full register with a valid email plus you have to hand over additional information which I found to be a bit forward.

● Design Earbuds

I found the MOMENTUM True Wireless 4 TWS earbuds to be very comfortable.

One of the reasons is their shape but they go further by implementing a replaceable rubber fin around the rim of the front part of the earbud. This allows you to customize the outer shape and you can choose from three sizes that Sennheiser includes with each set.

This fin system is a winner because it allows the user to modify the size that touches the inner ear and that in itself allows you to customize the comfort level. I'm surprised this hasn't been implemented more often.

The MOMENTUM True Wireless 4 TWS body is composed of a composite design and an all-polymer body. The output stems are short and stubby with a lip around the tip to hang onto the ear tips.

However, be careful with using aftermarket tips because they tend to slip off easily and could prevent the earbuds from seating themselves in the charging case correctly.

The newer ear tip is also designed to reduce clogging, so it is easier to clean if necessary, and also comes with an XS size ear tip set.

The MOMENTUM True Wireless 4 TWS earbuds are IP54 rated and have a couple of built-in features including a sensor that detects when you have them on, along with left and right indicators plus a status or pairing LED.



Note: The above pictures and texts are transferred from headfonics.com. If there is any infringement, please contact InRaiser.

JUTAO KT60
WATERPROOF STEP HEART RATE
TOUCH SCREEN HIGH-DEFINITION

JUTAO CF96
FEMALE PHYSIOLOGICAL CYCLE
SMART WATCH

JUTAO ZX18
FIRST IN THE 1.57 DISPLAY
SCREEN INDUSTRY

JUTAO P8
COLORFUL AND LIGHTWEIGHT
METAL BODY

JUTAO T10Pro
REAL TIME TEMPERATURE
MONITORING

SMART WATCH

HIGH DEFINITION
LARGE SCREEN

- Control the smart home to obtain weatherforecast, turn on local alarm clock timer stopwatch function.
- Remote control photography for heart rate blood pressure, blood oxygen sleep monitoring.

SHENZHEN JUTAO TECHNOLOGY CO., LTD

CONTACT : 86+139 2379 9610
ADD : 526, NO. 76 TIANBEI SAN ROAD, LUOHU DISTRICT, SHENZHEN



INTELLIGENT WEARING AND SPORTS HEALTH

SHARING SMART LIFE

INTELLIGENT REMINDER

HEART RATE MONITORING



- 4G FULL NETWORK CONNECTIVITY
- 5G WIFI
- LARGE CURRENT
- AMOLED SCREEN
- PAI LI CHA
- SWIMMING GRADE WATERPROOF
- AI POSITIONING



Z06

MULTIFUNCTIONAL INTELLIGENT BRACELET



ZL12T

MULTIFUNCTIONAL INTELLIGENT BRACELET



292

MULTIFUNCTIONAL LUMINOUS SPORTS WATCH



ZL11

MULTIFUNCTIONAL INTELLIGENT BRACELET



K1020S

QUARTZ WATCH



M-89.2

MECHANICAL WATCH

GUANGZHOU MOKO WATCH INDUSTRY CO., LTD

MOD: 86+15889947008(MISS.YANG)

ADD: ROOM 401-D976, NO. 129 DONGPING NORTH ROAD, YONGPING STREET, BAIYUN DISTRICT, GUANGZHOU, GUANGDONG



LED CIRCULAR SMART WATCH

lovely Fashion electronic watch Leisure Metal Male and Female Student Couple Minimalist design, classic return to fashion trend, electronic watch with silicone strap for comfortable fit on the wrist.

REASONS FOR CHOOSING A SMARTWATCH

Enjoy intelligent life~

- 01 INTELLIGENT COMMUNICATION
- 02 ISUPPORT NFC ACCESS CARD
- 03 STRONG ENDURANCE
- 04 WIRELESS FLASH CHARGING
- 05 BLUETOOTH CALL
- 06 COMPREHENSIVE HEALTH MONITORING
- 07 OFFLINE PAYMENT
- 08 MESSAGE REMINDER



SMART PHONE WATCH

GET A DEEPER UNDERSTANDING OF SMART WATCHES



MULTI-SPORT MODE

WHETHER HIKING, RUNNING, CYCLING, BASKETBALL, FOOTBALL, SKIPPING ROPE, BADMINTON, YOU CAN ALWAYS KNOW YOUR HEART RATE, CALORIES AND OTHER PHYSICAL CONDITIONS, ADJUST THE INTENSITY OF EXERCISE.



LIFE ASSISTANT INFORMATION PUSH

AN EASY-TO-USE SMART ASSISTANT THAT DISPLAYS REMINDERS OF INCOMING CALLS SYNCHRONOUSLY WITH YOUR MOBILE PHONE, AND SUPPORTS SMS, WECHAT, QQ AND OTHER DIFFERENT APP INFORMATION PUSH, YOU CAN SEE IT RIGHT AWAY.



SHENZHEN JIAMING INFORMATION TECHNOLOGY CO., LTD

MOD: 86+13715350713

E-MAIL: 2377141064@qq.com

ADD: 1216, 12TH FLOOR, BLOCK A, BUILDING 2, OVERSEAS DECORATION BUILDING, NO. 122 ZHENHUA ROAD
HUAHANG COMMUNITY, HUAQIANG NORTH STREET, FUTIAN DISTRICT, SHENZHEN

SMART CALL WATCH

EXERCISE, NOT JUST STEPS

SIMPLICITY SUITABLE FOR DAILY PAIRING

20天

STANDBY TIME

8天

NORMAL USE



NO.1 ZERO MAX

1.91 INCHES

1.91-inch center large screen, ultra-thin body design, quick response to incoming calls and text messages, 100+exercise mode selection, 24-hour heart rate, blood oxygen, and pressure monitoring, 20 days of long battery life and low power consumption mode.



NO.2 H60 YOUTH SMART

1.69 INCHES

Featuring a 1.69-inch, COF ultra retina high-definition full touch full screen display with a clear 240 * 280 high-definition resolution, wearing a watch allows for easy access to music control, breathing training, information viewing, and sedentary reminders, making life convenient and simple.



NO.3 H90 MULTIFUNCTIONAL

1.81 INCHES

1.81-inch high-definition screen, Bluetooth health monitoring, long-lasting endurance, sports mode, one click connection to watch for smooth communication, anytime and anywhere, AI voice assistant for personal companionship, healthy and long-lasting heart rate protection, and support for multiple sports modes.



NO.4 I3 STUDENT

1.78 INCHES

The 4G multifunctional smartwatch has a 1.78-inch high-definition large screen, a full core intelligent water drop screen, and a large screen size. Not only is it faster than expected, but it also saves 30% of power. The speed of the large memory is unmatched, and WeChat video calls and online chats grab red envelopes.



NO.5 H22 BLUETOOTH CALL SPORTS

2.02 INCHES

2.01 high-definition display screen, message reminder for communication at any time, supports various types of information reminders such as calls, WeChat, QQ, etc., and can be seen immediately when lifting a bowl. Whether it's driving, running, mountain climbing, or other outdoor activities, you won't miss every important message.



NO.6 T93 SMART

1.83 INCHES

1.83-inch ultra retinal high-definition screen, large capacity battery for longer use, massive dial customization, information push for incoming calls, IP67 waterproof to meet basic waterproof requirements, intelligent monitoring and health protection, 110+sports mode.

DONGGUAN LIANGHAO PLASTIC ELECTRONICS CO., LTD

MOD: 0769-8218 6297 / 86+136 8257 5244

WEB: WWW.SYMSB.COM

ADD: ROOM 201, NO. 2, LANE 1, LIZHIYUAN STREET, YANGWU, DALINGSHAN TOWN, DONGGUAN CITY



WOMEN'S BRACELET GTOI SMARTWATCH

GODDESS EXCLUSIVE WATCH

THE COMPANY'S MAIN PRODUCTS INCLUDE SMART WATCHES, SMART BRACELETS, BLUETOOTH HEADPHONES, MOBILE POWER SUPPLIES, ENERGY STORAGE BATTERIES, PD FAST CHARGING AND OTHER INTELLIGENT ELECTRONIC PRODUCTS.



HEART RATE MONITORING



INTELLIGENT RECOGNITION



AOMLED SMART WATCH



AMOLED full color large screen, temperature monitoring with 100 local dials for strong battery life, Bluetooth call AI voice assistant for local recording, TWS earphones for sports and health companion with 6 menus.



SLEEP MONITORING

Record the complete sleep structure, monitor sleep quality throughout the process, monitor real-time heart rate and blood oxygen, analyze big data, evaluate sleep quality, and combine sleep problems to help improve sleep quality and easily sleep well.



HEART RATE MONITORING

24-hour heart rate monitoring protects health throughout the day. Imported optical sensors, combined with heart rate algorithms, can quickly measure heart rate, blood pressure, blood oxygen, and other data, allowing you to understand your physical condition anytime and anywhere.

MULTIPLE SPORTS

Based on real-time heart rate monitoring and algorithm analysis, real-time presentation of relevant data allows you to understand your exercise performance, customize exercise plans, adjust exercise intensity, and every attempt will accompany you.



SHENZHEN NUOMA ELECTRONICS CO., LTD

MOBILE: +86 181 2452 6769

ADD: 6095 BAO'AN AVENUE, XINHE COMMUNITY, FUHAI STREET, BAO'AN DISTRICT SHENZHEN, GUANGDONG 607



SMARTWATCH

NEW T30

Designed specifically for outdoor sports
IP68 waterproof
1.6 inch high-definition round screen



Extra long standby



AI voice



Intelligent learning



Bringing users a better life experience Technology changes Life

SMARTWATCH

BLOOD PRESSURE BLUETOOTH WATCH

XP68 waterproof 400 milliampere ultra long standby ATS3085 single core dual mode 1G+4G memory Bluetooth 5.0 1.6 inch large screen with 24 sports modes. The high-definition retina screen has a smoother picture, smooth and flexible, pleasing fingertips, and no need to lift the wrist to view the time. Even in strong light, important information such as incoming calls, reminders, and sports can be clearly displayed.



WOMEN'S SMART WATCH

The intelligent small rigid watch combines strength and softness with youthful fashion, making it lightweight, comfortable, and colorful. With a silicone strap that is skin friendly, it is lightweight and comfortable to wear. The 1.09-inch full circle screen, paired with a narrow border design, fits snugly to your wrist and provides you with the best visual experience.



OUTDOOR SPORT WATCH

It is particularly important for outdoor watches to be sturdy and reliable, strong and durable. Whether it is in alpine snowfields or tropical jungles, they can resist tenaciously and respond calmly. Record various data in states such as table tennis, basketball, football, badminton, cricket, mountaineering, off-road, and climbing machines.



LELEJIA TECHNOLOGY SHENZHEN CO., LTD

mobile: +86 134 2879 9871

Add: B805, No. 249 Henan New Village, Songyuanxia Community, Guanhu Street, Longhua District, Shenzhen



Bluetooth SPORTS BRACELET

PHONE MESSAGE SYNCHRONIZATION



Y68

SMART BRACELET

DISPLAY SCREEN: 1.44 INCH IPS
 RESOLVING POWER: 128*128
 MAIN CONTROL CHIP: HS6620D
 TOUCH TYPE: SINGLE TOUCH
 COMPATIBILITY: ANDROID/IOS
 CHARGING METHOD: USB CHARGING
 SUPPORTS BLUETOOTH: BLUETOOTH 4.0
 SUPPORT DEVICE: OS8.0 OR ABOVE, ANDROID 4.4 OR ABOVE

H13

SMART BRACELET

DISPLAY SCREEN: FULL SCREEN TOUCH
 WATCH SIZE: 50.9 * 4012.1MM
 BATTERY: 150MAH POLYMER BATTERY
 SYSTEM REQUIREMENTS: ANDROID 5.1 AND ABOVE, IOS8.2 AND ABOVE, SUPPORTING BLUETOOTH 4.0
 SCREEN RESOLUTION: 240x280



Guarding You
HEALTH MONITORING



No sense of wearing



IP67 waterproof



DONGGUAN HONGSHENGDA ELECTRONICS CO., LTD

Add: Room 601, Building 3, No. 3 Taixing Road, Shigu, Tangxia Town, Dongguan, Guangdong

SPORTS BRACELET M8

MULTIDIMENSIONAL HEALTH MANAGEMENT



MULTIFUNCTIONAL WATCH

4G fullnetwork connectivity



HIGH DEFINITION
LARGE SCREEN

i7 Plus



SPORT WATCH

full touch sports smartwatch



H180
SMART WATCH



S11
SPORT WATCH



Z15
SPORT WATCH



S33
SPORT WATCH

SHENZHEN SHANGSHENG INDUSTRIAL CO., LTD

Mobile: +86 186 6515 4999

Add: Phase 6 of Chuangke Mansion, No. 88 Zhugaotang Road, Pinghu Street, Shenzhen



智能穿戴篇 / Intelligent Wearable

SMART WATCH

ELDERLY POSITIONING WATCH

Wearing it on your hand
always caring for your health



T8-01

SAYINGTON

- TEMPERATURE MONITORING
- HEALTH WARNING
- INTELLIGENT APP
- TELEVISION ENTERTAINMENT

+30%

MORE DISPLAY THAN OTHER WATCHES



S55

SAYINGTON

PRIMARY MIDDLE AND
HIGH SCHOOL WATCHES



T8X

SAYINGTON

ONE CLICK CALL FOR
HELP CALLOCATION



**ULTRA HIGH DEFINITION
LARGE SCREEN
REAL-TIME HEART RATE**

TBU-T6

SAYINGTON

- INTELLIGENT POSITIONING
- HEART RATE BLOOD OXYGEN
- ONE CLICK ALARM
- FREE DIALING



T6001

SAYINGTON

FOREST PATROL
SAFETY WATCH



SYT-S10

SAYINGTON

BODY TEMPERATURE
MONITORING HOME
CARE WATCH

SHENZHEN GUOLIXING INNOVATION TECHNOLOGY CO., LTD

MOBILE: +86 0755-2150 0153 / +86 135 0288 8627(MR.LU)

ADD: 4TH FLOOR, BUILDING 2, HIGH TECH INDUSTRIAL PARK, NO. 156 FUYUAN 1ST ROAD, BAO'AN DISTRICT, SHENZHEN



Outdoor sport watch

The intelligent small rigid watch combines strength and softness with youthful fashion, making it lightweight, comfortable, and colorful. With a silicone strap that is skin friendly, it is lightweight and comfortable to wear. The 1.09-inch full circle screen, paired with a narrow border design, fits snugly to your wrist and provides you with the best visual experience.

400 mAh **IP68** waterproof

Smart watch

Can make phone calls directly on the watch. Whether it's an outdoor morning run, walking the dog downstairs, picking up the delivery, or taking out food. Even if you don't have your phone, you can still answer and make calls and stay online.



HW28

HIGH DEFINITION SCREEN



T2PRO

CIRCULAR SCREEN MOTION



ZL02D

BLUETOOTH PHOTOGRAPHY

SMART SPORTS WATCH



SHENZHEN OUPINDA TECHNOLOGY CO., LTD

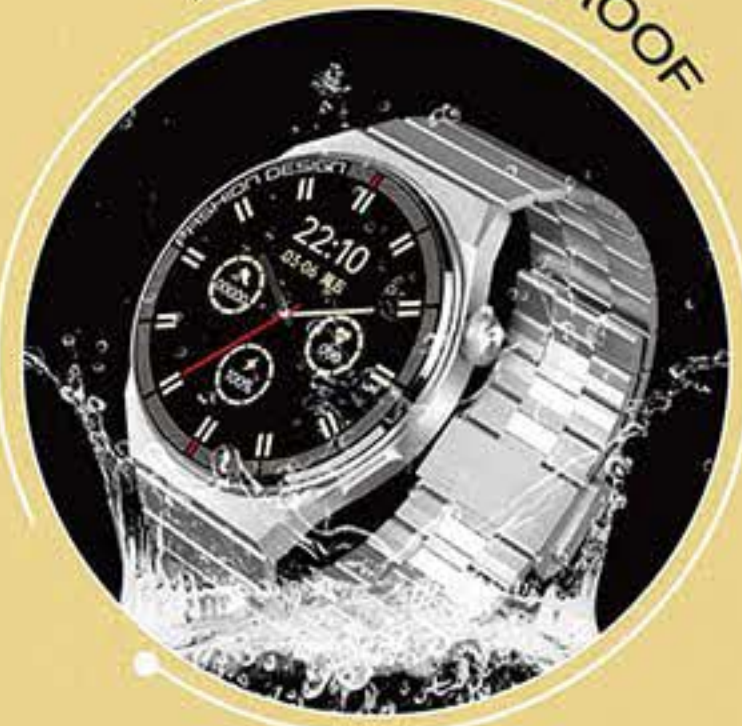
MOBILE: +86 150 7995 5979 (Mr. Chen)

ADD: 312, Building C, No. 30 Aviation Road, Sanwei Community, Hangcheng Street, Bao'an District, Shenzhen

SMART WATCH

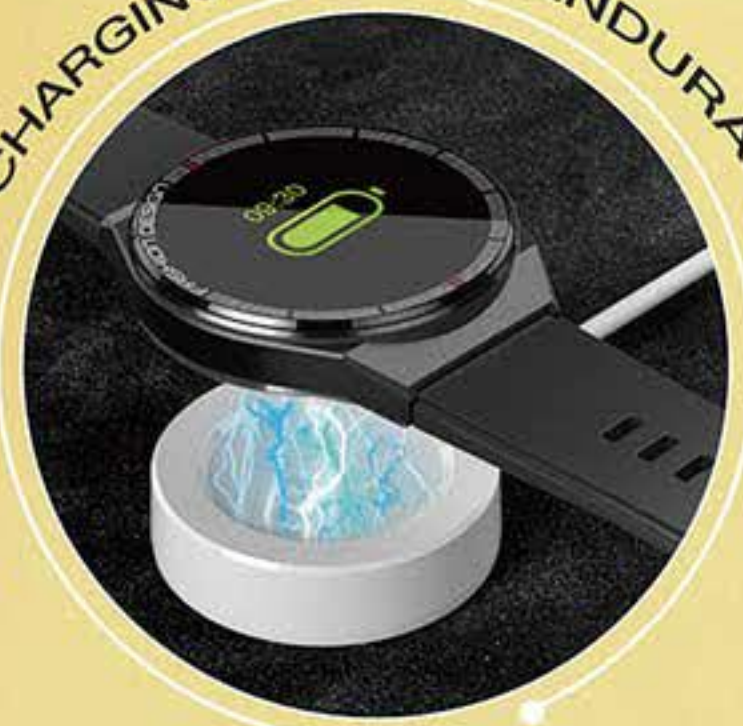


IP68 WATERPROOF



SAFE TO USE IN DAILY LIFE SCENARIOS SUCH AS WASHING HANDS AND RAINY DAYS

WIRELESS CHARGING STRONG ENDURANCE



10-15 DAYS
THE TYPICAL SCENARIO HAS A RANGE OF UP TO 4-6 DAYS
THE DURATION OF HEAVY USAGE SCENARIOS CAN REACH

SLEEP MONITORING SWEET SLEEP



RECORD SLEEP DURATION

GT3PRO PLUS

The 1.5-inch high-definition large screen provides a clearer and more vivid visual experience. The bedside light mode displays gravity sensing horizontal and vertical screens, supporting Bluetooth calls with high-definition original audio available at any time, and the long light mode of the off screen dial, Multi-functional NFC supports unlocking of community/company access control.



01 pay by sweeping a code



02 Sleep quality monitoring



03 Heart Rate Monitoring



04 Music Playback



05 waterproofing



06 Access control sensor



SHENZHEN CHENGHUA TECHNOLOGY CO., LTD

MOBILE: 0755-2890 8520 / +86 181 2468 7013

ADD: BUILDING 2, NO. 7 XIANGYE ROAD, XIALILANG COMMUNITY, NANWAN STREET, LONGGANG DISTRICT, SHENZHEN

ALEXA VOICE SMART WATCH

300mAh BATTERY CAPACITY

HD HIGH DEFINITION LARGE SCREEN



CUSTOM DIAL 14 SPORTS MODES

EXQUISITE DESIGN ADDS MORE MEANING TO THE EXTERIOR



14 SPORTS MODES TO ENJOY SPORTS TIME

MONITOR YOUR HEART RATE CHANGES

MONITOR YOUR SLEEP EVERY NIGHT

MONITOR YOURS TRESS LEVELS

ALWAYS CONNECTED ONLINE FOR CALLS

+30%
IMPROVED SCREEN DISPLAY AREA

ALEXA VOICE SMART WATCH

ID206mini

Control the smart home to obtain weatherforecast, turn on local alarm clock timer stopwatch function



Oxygen monitoring

14 movement modes

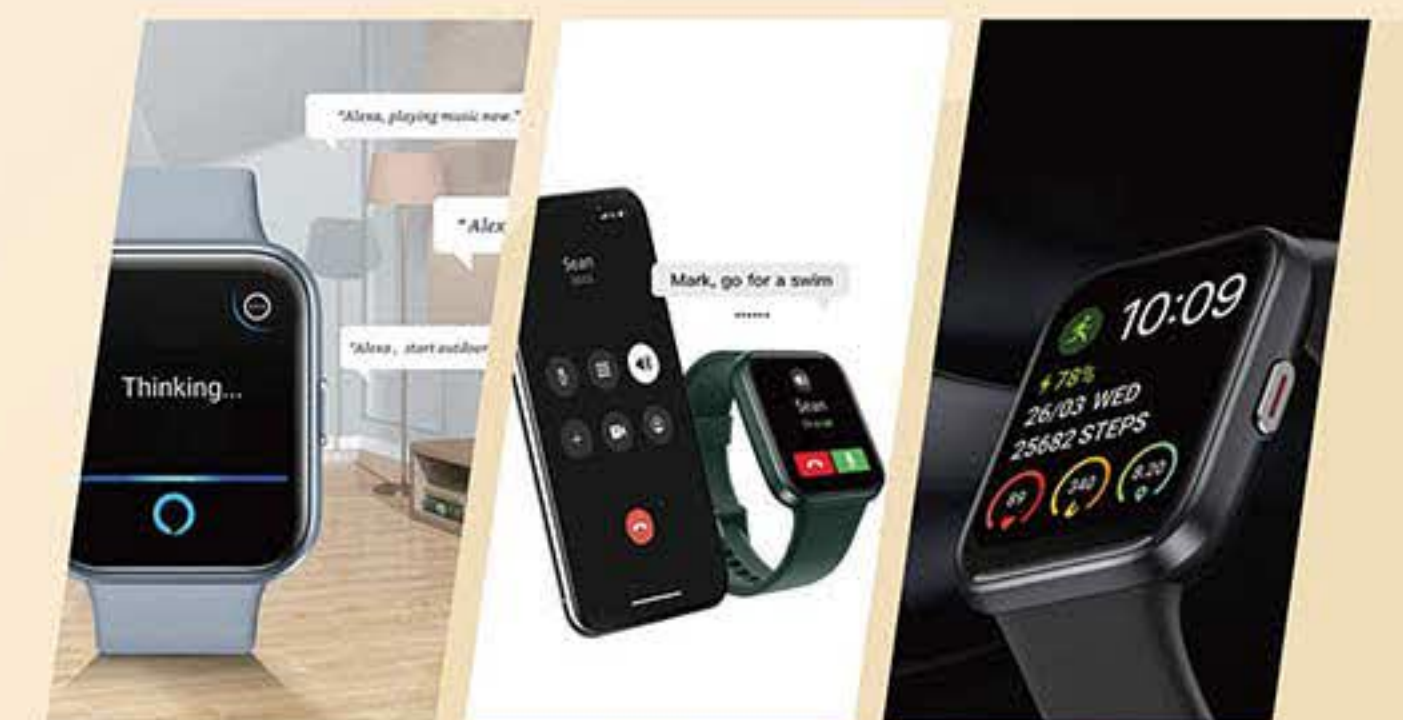
10 day battery life
<2.5 hours charging time



SMART BLUETOOTH CALLING WATCH

ID208BT

Pay attention to your physical health
Comprehensive monitoring of health data
Enjoy sports moments with music on the go



Alexa rouse

free-flowing telephone conversation

1.69 inch Bigger screen, more eye-catching

SHENZHEN AIDU TECHNOLOGY CO., LTD

+86 0755-8252 9675 / +86 186 0305 8799(Mr.Zeng)

11th Floor, Building 3, Guole High tech Industrial Park, Intersection of Dalanghuaning Road and Lirong Road, Longhua New District, Shenzhen



DEEP WATERPROOFING SMARTWATCH



Waterproof watches are divided into regular waterproof and professional waterproof And professional waterproof watches can withstand immersion in different depths of water

FITBIT SENSE SMART WATCH

Waterproof watches are divided into regular waterproof and professional waterproof And professional waterproof watches can withstand immersion



01 SMART WATCH 3PRO

1.36 inch high-definition screen Alipay function AI voice assistant independent time alarm clock NEC access key multiple sports modes



02 SMART WATCH GT3

Intelligent low-power waterproof and dust-proof GPS track positioning AI voice assistant supports calls from Alipay easily



03 SMART WATCH Q3 MAX

Three watch straps, six options for Bluetooth call information synchronization, rotating crown, flexible and practical new low-power chip



04 SMART WATCH Q5 MXA

High definition 390 * 390 bright large screen, providing a new experience on the wrist with alloy body glass bezel, sturdy and wear-resistant



05 SMART WATCH ST6

Bluetooth voice call, local music playback, Bluetooth earphones, local recording, call dial, Siri dialing



06 SMART WATCH I69

Supporting NFC access control unlocking, simply lift the watch on your wrist and approach the NFC door lock to quickly open the door



07 SMART WATCH I39

Simply rotate the rotating crown lightly to scale the applications on the chessboard desktop. quickly and directly reaching the target function



08 SMART WATCH C21

Ip68 deep waterproof, suitable for more environments, strong body, anti drop, anti impact high-definition Bluetooth communication



09 SMART WATCH MX11

Local music playback, call heart rate, custom dial, MP3, men's and women's smartwatch with powerful ring function to meet your needs

SHENZHEN CHENGYING ELECTRONIC TECHNOLOGY CO., LTD

MOB: +86 189 2678 6396(Miss Duan)

ADD: Building 401, Building B, No.131 Bulan Road, Shanglilang CommunityNanwan Street,Longgang District.Shenzhen

SMART WATCH

HIGH DEFINITION

WEARING A WATCH IS PUTTING ON HEALTH



- DEEP WATERPROOFING
Sealing and waterproofing technology



- BLUETOOTH CALL DIRECT
Easily deal with handwashing splashes



- CONVENIENT LIFE
Communicate anytime anywhere often



- BODY TEMPERATURE DETECTION
- MASSIVE PERSONALIZED DIAL
- MULTIPLE SPORTS MODES
- EXTRA LONG RANGE

DEEP WATERPROOFING

Elemental Shanxiong series mountaineering wristwatches have the functions required for outdoor exploration. The altimeter for height measurement, the barometer for convenient prediction of apocalyptic changes and the compass for navigation are only for the survival of urban and outdoor exploration.



HIGH KT60



HIGH KT80



HIGH KT90



SHENZHEN LUOHU DISTRICT FUYONG XINGFENG ELECTRONICS FACTORY

Tel: +86 139 2379 2848(Miss Zhang)

Add: 5B, Building 8, Dongxiao Garden, Dongxiao Road, Luohu District, Shenzhen

SMART WATCH

HIGH DEFINITION

Elemental Shanxiang series mountain-eering wristwatches have the functions required for outdoor exploration. The altimeter for height measurement, the barometer for convenient prediction of apocalyptic changes and the compass for navigation are only for the survival of urban and outdoor exploration.

-  barometer
-  compass
-  weather forecast
-  Height measurement

WEARING A WATCH IS PUTTING ON HEALTH



INTELLIGENT SPORTS BRACELET

Heart rate measurement, longlasting endurance, massive online dials in multiple languages



MONITORING HEALTH

Heart rate and blood pressure measurement, sleep monitoring, intelligent power management module ultra long standby



SMART BRACELET

Fashionable intelligent sports bracelet, monitoring exercise meter steps, heart rate, sleep, lightweight design, customized dial



SHENZHEN YUANZE INTELLIGENT CO., LTD

TELEPHONE: +86 158 1739 4510 (Miss gao)

ADDRESS: 4th Floor, Building D2, Longfei, Longcheng Industrial Park, Longcheng Street Longgang District, Shenzhen

BLUETOOTH INTELLIGENCE

SMART WATCH



BLUETOOTH CALL DIRECT

Elemental Shanxiang series mountaineering wristwatches have the functions required for outdoor exploration.

SMARTWATCH

WEARING A WATCH IS PUTTING ON HEALTH HIGH DEFINITION

BLOOD PRESSURE MONITORING

You can easily measure blood pressure and oxygen levels between your wrists, keeping track of your physical health at all times.



APP PUSH REMINDER

MULTIPLE SPORT MODES

Built-in multiple sports modes, allowing for direct movement while wearing a watch

Watch can record all your exercise data

Magnetic contact charging is convenient and fast, and can be fully charged in 80 minutes



SHENZHEN JINSIDA INDUSTRIAL CO., LTD

Phone: +86-755-82789569 Mobile: +86 136 5031 9561

Add: 2nd Floor, Building 2, Hongzhu Yongai Industrial Park, Huazhujiao, Xixiang Street, Bao'an District, Shenzhen



ABOUT US

At Amazfit, see the colorful future of smart wearables.

We integrate fashion and innovation into technological intelligence, and make electronic devices the carrier of personal style, linking all aspects of future life.

From Amazfit's first product, market-leading sensor research and development, to the world's first curved display, every series of Amazfit's rich product line that is constantly changing is our experience in intelligent hardware technology, product design and interaction scenarios. Adhere to the research and development milestones of forward-looking innovation.

As the user's companion, we lead a healthy and active lifestyle – helping users to light up their inner drive, so that everyone can live a life of love and splendor.

400-000-6666

<https://cn.amazfit.com/>

smart wear



- BLOOD PRESSURE DETECTION
- NFC ACCESS CONTROL
- INDEPENDENT MUSIC PLAYBACK
- 50 METERS PROFESSIONAL WATERPROOF



IEM & EARPHONES

FiiO FF3S Review

In this feature, Meldrick reviews the FiiO FF3S, which is a new set of 14.2mm dynamic driver earbuds with a detachable SPC cable and interchangeable plugs. It is priced at \$89.99.

Disclaimer: This was sent to me as a sample in exchange for my honest opinion. Headfonics is an independent website with no affiliate links or services. I thank FiiO for its support.

Listed in 2024
Price: \$89.99



Today I will be assessing the FiiO FF3s, an updated take on the brand's well-received FF3 dynamic driver earbuds priced at \$89.99. Sporting a new detachable cable and a bass-focused sound signature, does the FF3S have what it takes to stand out?



Tech Highlights

The FiiO FF3S is an updated pair of "earbud" style single dynamic driver earphones that come with a removable cable with interchangeable terminations.

Unlike its predecessor the FF3, the FF3S stock cable does not only come with a detachable 3.5mm unbalanced and a 4.4mm balanced alternative plug but also the individual buds themselves are now detachable via the same 2-pin 0.78mm connector seen in the FiiO FF1.

Up until recently, it was quite rare for earbuds to come with a detachable cable, making FiiO's new direction with their earbud lineup quite refreshing.

Similarly to FiiO's other earbud offerings, the FF3S makes use of a comparatively large beryllium-plated PU dynamic driver. According to FiiO, this choice of driver construction plays a large part in the improved bass response that they speak highly of when compared to most earbuds.

Lastly, the FF3S makes use of an upgraded aluminum shell and design that not only gives it a more subdued appearance but also greatly improves comfort over the original FF3 by decreasing the weight of each earbud by 52%.

Design & Stock Cable

As previously mentioned in our review of the FiiO FF1, the original FF3's more premium build and construction did come with some compromises.

After testing and comparing all three earbuds it is obvious that FiiO has taken the design highlights of the original FF3 and FF1 and fused them to design the superior FF3S.

The stem and body of each earbud are constructed out of aluminum with a sleek anodized black finish with slight hints of green. The appearance and hand feel of the aluminum shell do not particularly stand out, but in daily use, I appreciated their durability and how resistant they were to wear and tear.

The backplate of the FF3S is identical to the one used in the original FF3, making use of an ornate geometric pattern with a tasteful bronze color. The graphic is sealed under what appears to be some sort of sapphire, giving the otherwise utilitarian shell of the FF3s some flare.

By the backplate, a pair of vents are expertly machined onto the shell to improve airflow and contribute to the improved bass response. This machining of the vent is quite nice and I did not feel any sharp edges or gaps even when I ran my finger across the circumference of each bud.

The FF3S exchanges the tube-type stem of its predecessor for a more rectangular flat-type stem seen in the more affordable FiiO FF1. At first glance, this flat stem may appear to be less premium, but as we will mention below, this new stem design comes with much-appreciated improvements to comfort.

The stock cable of the FF3S is one of its main selling points, as it is very well-made and versatile. The cable is composed of 152 wires of high-purity silver-plated monocrystalline copper, covered with German-made TPU material.

Aside from the 0.78mm terminations on the left and right side of the cable, the FF3S stock cable is identical to that of the original FF3.

I was excited to try the FF3S out with my collection of IEM cables. However, the narrow 2-pin connector on the buds themselves made them incompatible with my other cables, aside from the stock cable of the FiiO FF1.

According to the FiiO website, they are currently developing a "FiiO-designed headphone cable" that will be compatible with the FF1 and FF3S. This would be great in ensuring that the buds do not become useless in case of cable damage.



Note: The above pictures and texts are transferred from theverge.com. If there is any infringement, please contact InRaiser.

Campfire Audio Ponderosa Review

In this feature, Thomas reviews the Campfire Audio Ponderosa, which is a new 5 custom balanced armature driver universal IEM tuned for discerning listeners. It is priced at \$799.

Listed in
2024
Price:\$799.00



CAMPFIRE AUDIO PONDEROSA REVIEW

The custom 5 BA driver Campfire Audio Ponderosa is technically capable and versatile IEM with a widespread appeal thanks to its warm, robust low-end, and energetic, but non-fatiguing mid and upper range performance. It's easy to drive and isolates well from background noise.

- Versatile sound signature
- Customization options
- Excellent ergonomics

● Campfire Audio Ponderosa Review — Headfonics



In late 2023 Campfire Audio released a line of four earphones under the all-new Chromatic Series: Cascara, Ponderosa, Supermoon, and Bonneville. The Ponderosa is the second most affordable of the bunch and one of the more affordable models across Campfire Audio's current lineup.

The Chromatic Series is unique within Campfire Audio's showcase in the level of customization available. For each model, you can select between custom and universal fit styles, three cable terminations, two accessory packages, and two different color options.

Each model also delivers sound via differing driver architectures. The Ponderosa uses only balanced armatures, in this case, five per side; two for highs, one for mids, and two for lows.

If this seems familiar, it's the same configuration found in the universally acclaimed Andromeda models Campfire Audio is best known for. While there are similarities in the way the Ponderosa is tuned, there are some significant differences as well, and one does not replace the other.

•Tech Highlights

Campfire Audio is no stranger to innovation, having patented several unique technologies and design philosophies that go into their products. Unsurprisingly, the Ponderosa utilizes numerous technologies found within Campfire Audio's portfolio.

First on board is their Tuned Acoustic Expansion Chamber; or T.A.E.C., a driver housing that aids in tuning. In the Ponderosa, it is applied to the dual high-range armatures and serves to improve detail while allowing their output to integrate smoothly with the other drivers.

The Ponderosa incorporates the concept of Phase Harmony Engineering. This is a tuning philosophy where frequency ranges are sectioned off and applied to select drivers in the setup.

This tuning is achieved through the physical design of the earphone and improves how the incorporated drivers interact with each other. It can eliminate problems with phase while enhancing technical capabilities like imaging, separation, resolution, and soundstage.

The shell of the Ponderosa features Campfire Audio's Solid Body Design. This is a 3D-printed housing in which the drivers are directly installed and act as structurally critical components.

The internals are also designed to complement the drivers and aid in tuning the signature. The final product is solid and reliable, the result of being purpose-built around the drivers and routing ports themselves.

•Design

The Ponderosa's universal shell design, along with the whole of the Chromatic Series, is based on the average of the thousands of ear impressions Campfire Audio has cataloged from custom-fit earphone orders. It should then be no surprise that even the universal fit Ponderosa looks custom in nature.

Delicate contours make up most of the 3D-printed acrylic shell. Breaking up the otherwise smooth, monotone design are hand-polished, chrome stainless steel nozzles and a vented backing that houses Campfire Audio's beryllium/copper MMCX ports.

The nozzles are of the same design found on their latest products with one central hole surrounded by seven smaller holes. The walls of the MMCX ports look to use less material when compared to those on past products, but I have no doubt they will remain long-lasting if my past experiences are any indication.

The Chromatic series fits in with the visual direction of Campfire Audio's custom earphones, without completely abandoning the various designs they popularized in the past.

While the shift away from an all-metal housing may seem like a misstep, in practice, the Ponderosa feels no less premium than other models in the lineup, plus it comes with additional benefits.



Note: The above pictures and texts are transferred from digitaltrends.com. If there is any infringement, please contact InRaiser.

WIRELESS & HIFI

MOONDROP Golden Ages Review

In this feature, Meldrick reviews the MOONDROP Golden Ages, which is an LDAC and ANC-capable TWS equipped with a 13mm planar driver. It is priced at \$79.99 SRP.

Disclaimer: This sample was sent to me in exchange for my honest opinion. Headfonics is an independent website with no affiliate links or status. I thank MOONDROP and Shenzhen Audio for their support.

Listed in 2024
Price: \$79.99



MOONDROP GOLDEN AGES REVIEW

Judging by pure sonic performance, the MOONDROP Golden Ages is a class-leading set of TWS earbuds. Its planar magnetic driver's technical prowess is complemented by MOONDROP's clean and musical house sound.

Aside from the high-performance wired IEMs MOONDROP is known for, the brand has also been steadily releasing its line of True Wireless Systems such as the Alice and Nekocake.

Their newest entry, the Golden Ages, stands out from their previous TWS models by being the first MOONDROP TWS to use a planar magnetic driver.

Slotting in the middle of MOONDROP's TWS lineup at \$79.99, its unique driver choice and in-app tuning capabilities make it a feature-rich TWS at this price point.



● how the Golden Ages performs and compares against some of its peers in this competitive TWS market.

Features

The Golden Age's use of planar magnetic drivers is uncommon in the TWS segment, with most pairs opting for more common dynamic drivers. On paper, planar magnetic drivers tend to offer better technical resolution performance, at the expense of power efficiency and weight.

With its support of LDAC, AAC, and the newer LC3 codec, the Golden Ages packs a comprehensive suite of the latest audio decoding and transmission technologies, aiming to deliver superior sound quality and latency.

A feature usually found in pricier TWS earphones, the Golden Ages comes with Active Noise Cancellation (ANC) and Transparency Mode Audio pass-through.

This increased versatility means the Golden Ages can be used to drown out unwanted background noise or let in outside road and car noise that could be useful for walks around the town.



Design Cradle

The first thing that stands out about the MOONDROP Golden Ages is the retro-inspired design of its cradle.

A nod to the original Sony Walkman portable cassette player released in 1979, the Golden Ages sports a similar blue and grey color scheme with visual cues on the front that aims to imitate how a Cassette tape looks through the see-through panel of the Walkman.

The case plastic has a nice matte finish that proved to be quite resistant to everyday scratches and fingerprints. The decorative print at the front of the case has a similarly matte finish that is very slightly raised from the rest of the shell.

The top of the grey lid further strengthens the Golden Age's association with the Cassette players of the past, insinuating that the release of the Walkman 45 years ago was the start of portable audio's "Golden Age".

Aesthetics will always be subjective. Throughout my testing, I've heard both positive and negative comments about the case design.

I quite like MOONDROP's design choices, but those who prefer simpler or more minimalistic design philosophies akin to Apple's AirPods may be turned off by the Golden Age's polarizing case design.

The rear of the case shows the only button on the carrying case, a bright orange button meant to pair the IEMs with source smartphones, laptops, and other devices.

Opening the top lid shows an interior dominated by orange. The case interior is composed of a mix of matte plastic for the outer frame and glossy plastic for the portions that come in contact with the earbuds.

Earbuds

The earbud stems are constructed of lightweight grey plastic with a matte finish. They have a rectangular shape that makes them easy to pull in and out of the ear and do not cause any comfort issues.

The earpiece of the earbud is constructed of grey glossy plastic that can highlight oil and dead skin. However, it is easily wiped off by a microfiber cloth. At the tip of the earbud is the oval-shaped nozzle, a departure from most circular-shaped nozzles.

The stems have a decorative print that aims to be a nod to the independent left and right channel volume controls found on the original Sony Walkman. This is, once again, a polarizing design decision, with some people telling me that the stem decal was already an immediate deal breaker.

I am quite indifferent to the stem design, but those who may be more conscious of the Golden Ages form factor in everyday use may be put off.



Note: The above pictures and texts are transferred from headfonics.com. If there is any infringement, please contact InRaiser.



耳挂、硅胶 (EAR HANGING、SILICA GEL)



插头、插针 (PLUG, PIN)



DONGGUAN SOUND ELECTRONIC MATERIALS CO.,LTD.
 (DONGGUAN SHENGHUI TAIXIANG SILICONE PRODUCTS CO., LTD.)
 CONTACT: Mr. Liu LINE: +86 159 9987 1272 ADDRESS: NO.17 SAN YUAN ROAD, CHONGMEI INDUSTRIAL ZONE, BO TOU, CHASHAN TOWN, DONGGUAN CITY, CHINA
 TEL: 0769-82210850 FAX: 0769-82210860



欢迎来电咨询
 Welcome to call us

提供各种优质的咪板、咪壳
 To provide a variety of high quality Kitty Plate Kitty Shell



东莞华洋电子有限公司 DONGGUAN HUAYANG
 联系人: 哇(su)先生 手机: +86 158 1836 1758 (微信同号) QQ: 772147378
 Mob: Mr.Sui +86 158 1836 1758 (Wechat same number)
 公司地址: 东莞市东城街道温塘周路283号二楼
 Add: 2/F, No. 283 Wenzhou Road, Wentang, Dongcheng Street, Dongguan City





3C DIGITAL INDUSTRY WHOLESALE MAGAZINE

HOT-LINE 400-6838-033
 TEL (SHAN TOU) +86 0754-8991-8880
 WEB www.ejrr.com
 ISSUER
 Guangdong Tanggula Culture Creative Co., LTD
 ISSUING ADDRESS
 12C, Changrong Building, Jinsha East Road, Shantou, Guangdong
 PUBLISHER
 Hong Kong Tanggula Culture Creative Co., LTD
 PUBLICATION ADDRESS
 4B, Kingway Commercial Building, 171-173 Lockhart Road, Wan Chai Road, Hong Kong
 SOLEMN STATEMENT:
 The pictures and text in this publication have not been approved in writing by the relevant copyright owners. It shall not be reproduced and used in any form or method, if there is any infringement. The issue is not responsible for this publication, hereby declare.

CONTENTS
 THE FIRST ISSUE IN 2025
 (APRIL TO MAY)

**GOLDEN PAGE
 BACK COVER**

Chuangmao Electronics Digital Co., Ltd. (创贸)

INSIDE FRONT COVER

Ohayo (雷登)

- 01 Libratone Sound (小鸟创新)
- 02 Dongguan Geku Acoustics Co., Ltd. (歌酷)
- 04 Niae Smart Watch Technology Co., Ltd. (Niae)
- 05 Guangzhou Rock Art Design Co., Ltd. (岩石)
- 06 Qihang Electronics Technology Co., Ltd. (启航)
- 08 Shenzhen Wangyi Intelligent Co., Ltd. (旺亿)
- 09 TMOXX (天魔星)
- 10 Sanag sound (赛那)
- 12 Shenzhen Fumnuo Technology Co., Ltd. (富姆诺)
- 14 Dongguan Chuanglian Technology Co., Ltd. (创联)
- 16 Ezon Smart Wear (宜准)
- 17 Guangdong IDK Mould Technology Co., Ltd. (艾迪克)
- 18 Chenruijia Electronics Technology Co., Ltd. (晨锐嘉)
- 158 Sound Electronics Materials Co., Ltd. (声态)
- 159 Dongguan Huayang Electronics Co., Ltd. (桦洋)



HEADPHONE SERIES

P20

Shenzhen Utrue Technology Co., Ltd. (优图尔)

- 22 Dongguan Gaobaozhen Electronics Co., Ltd. (高保真)
- 24 Yingtong Telecommunication Co., Ltd. (盈通)
- 26 Shantou Fengxing Electronics Factory (丰兴)
- 28 Yueyin Electronics Technology Co., Ltd. (悦音)
- 30 Xiaojie electronics technology Co., Ltd. (小杰)
- 32 Xiaoyun Electronics Technology Co., Ltd. (小芸)
- 34 Luxun Electronics Technology Co., Ltd. (路讯)
- 36 Tesheng Electronic Technology Co., Ltd. (特晟)
- 38 Gude Electronic Technology Co., Ltd. (骨德)
- 40 Gen.M Intelligent Technology Co., Ltd. (锦麦)
- 42 Jiangxi Quyuesheng Electronics Co., Ltd. (趣悦声)

- 44 Huizhou Eight Cubic Technology Co., Ltd. (八立方)
- 46 Shantou Qiangzhisheng Plastic Electronic Factory (强之声)
- 48 Dongguan Langge Electronics Co., Ltd. (狼歌)
- 50 Dongguan Weier Silicone Rubber Products Co., Ltd. (伟尔)
- 52 Dongguan Morandi Electronic Technology Co., Ltd. (莫兰迪)
- 54 Huizhou Chenyue Electronic Co., Ltd. (诚悦)
- 56 Shengli Silicone Products Factory (生力)
- 58 Baohuitong Hardware Plastic Mould Electronics Co., Ltd. (宝惠通)
- 60 Huizhou Jiezhisheng Electronic Technology Co., Ltd. (杰之升)
- 62 Dongguan Xiangzi Electronics Factory (湘资)
- 64 Dongguan Sweet Pie Acoustic Technology Co., Ltd. (悦耳派)
- 66 Dongguan Hifiremax Intelligent Technology Co., Ltd. (海菲麦克斯)
- 68 Guangzhou Nifeng Electronics Co., Ltd. (逆风)
- 70 Foshan Shengzhahui Electronic Technology Co., Ltd. (生之辉)
- 72 Kuyin Gplastic Co., Ltd. (酷影)
- 74 Shantou Kinghot Electronics Co., Ltd. (锦鸿泰)
- 75 Dongguan Maikemagnetic Industry Co., Ltd. (迈科)
- 76 Dongguan Shengtao Electronics Co., Ltd. (胜涛)
- 77 Dongguan Haoming Electronics Co., Ltd. (浩鸣)
- 78 Huizhou Maiceles Electronic Technology Co., Ltd. (迈塞尔)
- 79 Zhichuangda Electronics Factory (智创达)



**AUDIO SERIES
 P82**

ENKOR SOUND (恩科)

- 84 Dongguan Shishishun Technology Co., Ltd. (视视听)
- 86 Foshan Yinbeier Electronics Factory (音倍尔)
- 88 Lanlian Digital Technology Co., Ltd. (兰联)
- 90 Shenzhen Chaojin Electronics Co., Ltd. (超进)
- 92 Shenzhen Kaijason Electronics Co., Ltd. (凯杰森)
- 94 Fanatics Digital Technology Co., Ltd. (狂热者)
- 96 Leshang Creative Technology Co., Ltd. (乐尚)
- 98 Shenzhen Shangyitu Technology Co., Ltd. (尚意图)
- 100 Weitebao Technology Development Co., Ltd. (威特宝)
- 102 Shenzhen Siyi Media Co., Ltd. (源来音)
- 104 Shenzhen Ziyun Technology Co., Ltd. (紫韵)
- 106 Shenzhen Zhongshilan Industrial Co., Ltd. (中世兰)
- 108 Shenzhen Yale Electronics Co., Ltd. (雅乐)
- 110 Shenzhen Leyinheng Technology Co., Ltd. (乐音恒)
- 112 Dongguan Lefang Industrial Co., Ltd. (乐放)
- 114 Le'ang Electronics Technology Co., Ltd. (乐昂)
- 115 Shenzhen Kaiwu Life Co., Ltd. (开物)



**INTELLIGENT WEARABLE
 P118**

Shenzhen Jutao Technology Co., Ltd. (聚韬)

- 120 Guangzhou Moko Watch Industry Co., Ltd. (莫科)
- 122 Jiaming Information Technology Co., Ltd. (嘉明)
- 124 Lianghao Plastic Electronics Co., Ltd. (亮好)
- 126 Shenzhen Nuoma Electronics Co., Ltd. (诺玛)
- 128 Leleja Technology Shenzhen Co., Ltd. (乐乐家)
- 130 Hongshengda Electronics Co., Ltd. (泓盛达)
- 132 Shenzhen Shangsheng Industrial Co., Ltd. (尚晟)
- 134 Guolixing Innovation Technology Co., Ltd. (国立兴)
- 136 Shenzhen Oupinda Technology Co., Ltd. (欧品达)
- 138 Shenzhen Chenghua Technology Co., Ltd. (呈华)
- 140 Shenzhen Aidu Technology Co., Ltd. (爱都)
- 142 Chengying Electronics Technology Co., Ltd. (成赢)
- 144 Shenzhen Xingfeng Electronics Factory (兴锋)
- 146 Shenzhen Yuanze Intelligent Co., Ltd. (元泽)
- 148 Shenzhen Jinsida Industrial Co., Ltd. (金斯达)
- 150 Amazfit Smart Wear (华米)



**INDUSTRY INFORMATION
 THE LATEST INFORMATION OF INDUSTRY**

THE LATEST INFORMATION OF INDUSTRY

- 70 Final ZE8000 MK2 Review (Final ZE8000 MK2 评论)
- 116 Sennheiser MOMENTUM True Wireless 4 Review (森海塞尔运动真无线 4 评论)
- 152 FiiO FF3S Review (FiiO FF3S 评论)
- 154 Campfire Audio Ponderosa Review (Campfire Audio Ponderosa 评论)
- 156 MOONDROP Golden Ages Review (MOONDROP Golden Ages 评论)

